



LABOUR FORCE

NEW SOUTH WALES AND
AUSTRALIAN CAPITAL TERRITORY

EMBARGO: 11:30AM (CANBERRA TIME) MON 29 JAN 2001

CONTENTS

	<i>page</i>
Notes	2
 SUMMARY OF FINDINGS	
New South Wales	3
Australian Capital Territory	8
 LIST OF TABLES AND GRAPHS	
New South Wales	11
Australian Capital Territory	12
 INFORMATION	
Explanatory notes	46
Appendix:	
Supplementary topics	51
Regions of NSW and ACT	52
Regions of NSW and ACT—maps	57
Technical note: data reliability	58
Standard errors	61

- For further information about these and related statistics, contact Jill Tomlinson on Sydney 02 9268 4123 or the National Information Service on 1300 135 070.

NOTES

FORTHCOMING ISSUES *ISSUE (Quarter)* *EXPECTED RELEASE DATE*

	February 2001	27 April 2001
	May 2001	27 July 2001

ABOUT THIS PUBLICATION

This publication contains estimates of the civilian labour force in New South Wales (NSW) and the Australian Capital Territory (ACT) derived from the Labour Force Survey (LFS) component of the Monthly Population Survey, which is conducted on a sample basis throughout Australia. Explanatory notes for data contained in this publication can be found on page 46. Care should be taken in the interpretation of month-to-month movements in the estimates. Survey estimates are subject to sampling and non-sampling variability as explained in the Technical note on data reliability on page 58.

SYMBOLS AND OTHER USAGES

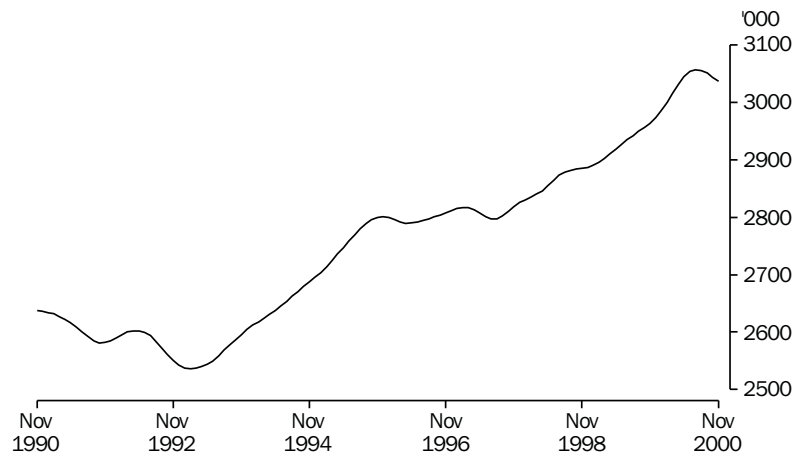
A	Area
C	City
MSR	Major Statistical Region
n.e.c.	Not elsewhere classified
SD	Statistical Division
SR	Statistical Region
SRS	Statistical Region Sector
*	Subject to sampling variability too high for most practical purposes. See the Technical note on data reliability.
. .	Not applicable
—	Nil or rounded to zero (including null cells)

Geoff Smith
Acting Regional Director
New South Wales

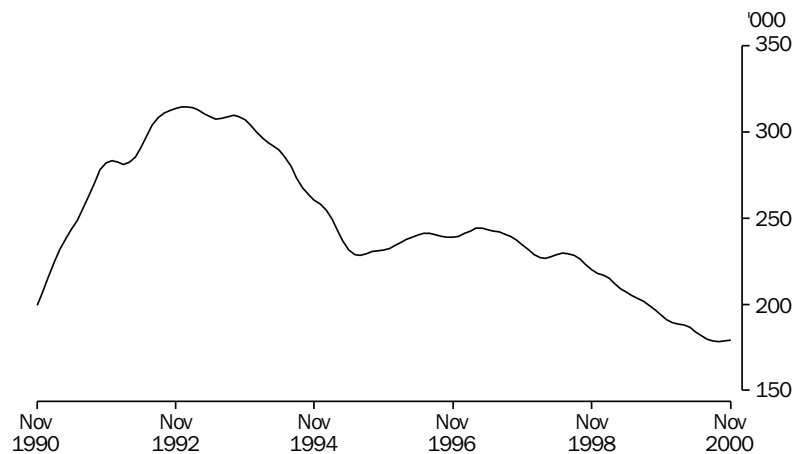
SUMMARY OF FINDINGS—NEW SOUTH WALES

TREND ESTIMATES

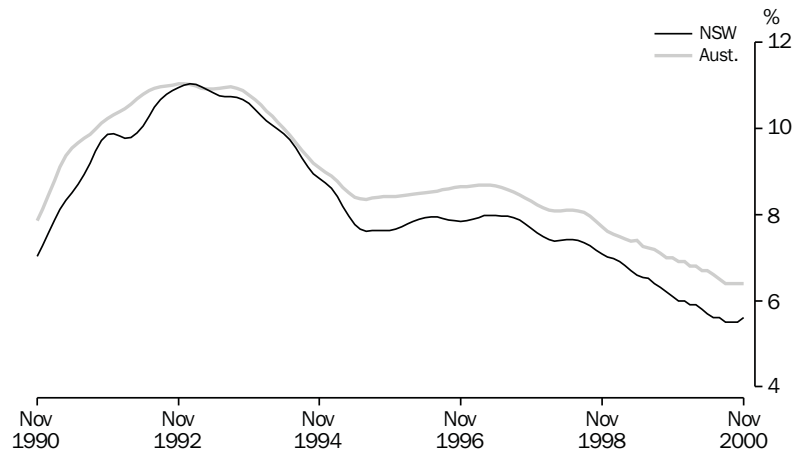
Employed persons The trend estimate of employed persons has risen steadily since July 1997 to reach a peak in July 2000. Since then it has declined to 3,036,700 in November 2000.



Unemployed persons The trend estimate of unemployed persons in NSW peaked at 244,000 in April 1997. Since then it has fallen steadily and reached 179,000 in November 2000.



Unemployment rate The trend unemployment rate in NSW reached a high of 8.0% in April 1997. Since then it has fallen steadily to reach 5.6% in November 2000.



Participation rate and labour force The trend estimate of the participation rate in NSW remained fairly steady throughout most of 1999. In 2000 it rose steadily through to the middle of the year, before falling to 62.2% in November 2000.

The trend estimated labour force in NSW remained fairly steady over the period from August 1998 to January 1999. Since then it has risen steadily during the middle of 2000 before declining again to reach 3,215,700 in November 2000.

SEASONALLY ADJUSTED ESTIMATES

The seasonally adjusted estimate of employment in NSW rose steadily to reach a peak in August 2000, before declining to 3,013,800 in November 2000. The seasonally adjusted estimate of the number of unemployed moved downward in 2000, before a rise to 185,400 in November 2000. The seasonally adjusted estimate of the unemployment rate also moved downwards in 2000, before a slight rise to 5.8% in November 2000.

REGIONS OF NSW

While the Labour Force Survey (LFS) is designed primarily to produce reliable estimates at the national and State/Territory level, it also delivers estimates for a number of regions within States. As with national and State estimates, regional labour force estimates are subject to sampling error. Since estimates for regions are components of corresponding estimates at the State level — and are thus based on a considerably smaller sample size — they are subject to higher relative standard errors. Care should therefore be taken in interpretation of regional estimates, particularly month-to-month movements.

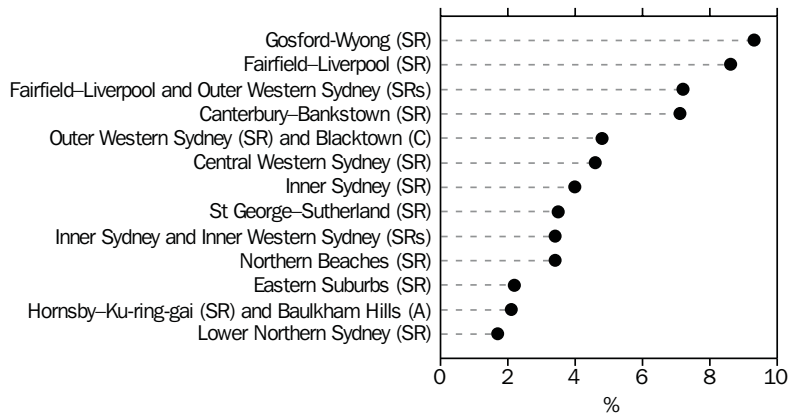
Sydney There were 2,005,400 employed people in the Sydney Major Statistical Region (MSR) in November 2000, a rise of 38,800 over the year from November 1999. Between November 1999 and November 2000, the unemployment rate rose from 3.9% to 4.5%.

Regional unemployment rates within the Sydney MSR in November 2000 ranged from 1.7% in Lower Northern Sydney Statistical Region (SR) to 9.3% in Gosford–Wyong SR. Participation rates varied from 54.9% in Canterbury–Bankstown SR to 69.0% in Lower Northern Sydney SR.

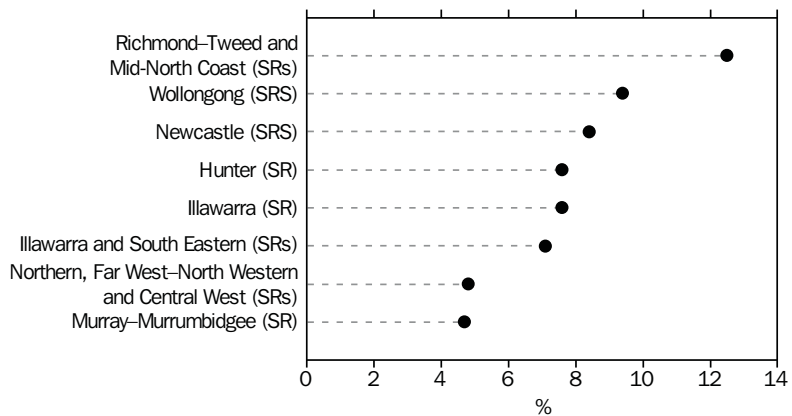
Balance of NSW There were 1,012,800 employed people in Balance of NSW MSR in November 2000, 14,300 more than in November 1999. The unemployment rate in November 2000 was 7.4%, a decrease of 0.6 percentage points on the figure recorded in November 1999.

Unemployment rates ranged from 4.7% in the Murray–Murrumbidgee SR to 12.5% in the Richmond–Tweed and Mid-North Coast SRs. Participation rates varied from 54.1% in the Richmond–Tweed and Mid-North Coast SRs to 66.4% in the Murray–Murrumbidgee SR.

UNEMPLOYMENT RATE, SYDNEY MSR, NOVEMBER 2000



UNEMPLOYMENT RATE, BALANCE OF NSW MSR, NOVEMBER 2000



INDUSTRY AND OCCUPATION

The industry in NSW with the highest gain in employment in the year to November 2000 was Property and business services with an increase of 52,300 persons or 15.7%. The largest fall occurred in the Wholesale trade sector, down 32,700 persons or 17.0%.

The industries with the highest employment in November 2000 were Retail trade with 437,400 persons (14.5% of total employed persons in NSW) and Property and business services with 385,900 persons (12.8% of total employed).

The major occupation group with the largest annual gain in employment in the year to November 2000 was Intermediate clerical, sales and service workers with an increase of 49,200 persons (9.5%) while the largest percentage fall was in the Tradespersons and related workers group, down by 25,500 persons or 6.3%.

AGE

The unemployment rate at November 2000 decreased with age from 15.9% for 15–19 year olds to 3.5% for the 45–54 years age group. The rate for the age group 55 years and over was 3.2%.

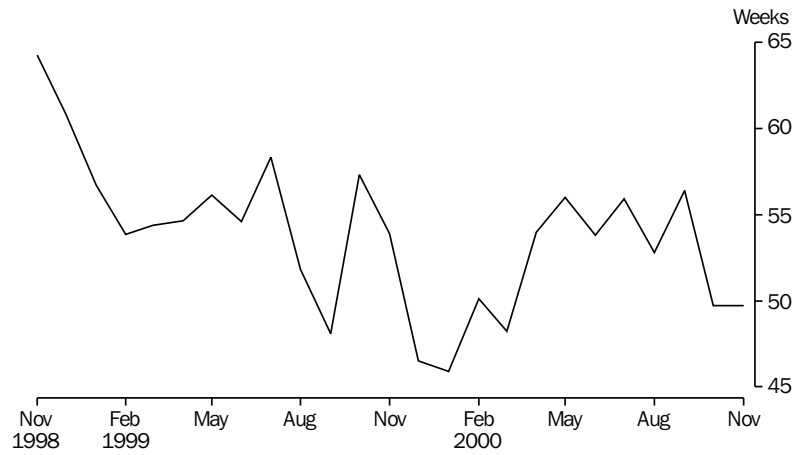
BIRTHPLACE

In November 2000, the unemployment rate for Australian-born people in NSW was 5.4%. For those born overseas in the main English-speaking countries the rate was 4.2% while for those born in other countries it was 6.4%.

DURATION OF UNEMPLOYMENT

In November 2000, the average (mean) duration of unemployment was 49.7 weeks and the median duration of unemployment was 14 weeks. More than 17% of all unemployed persons had been unemployed for two years or more.

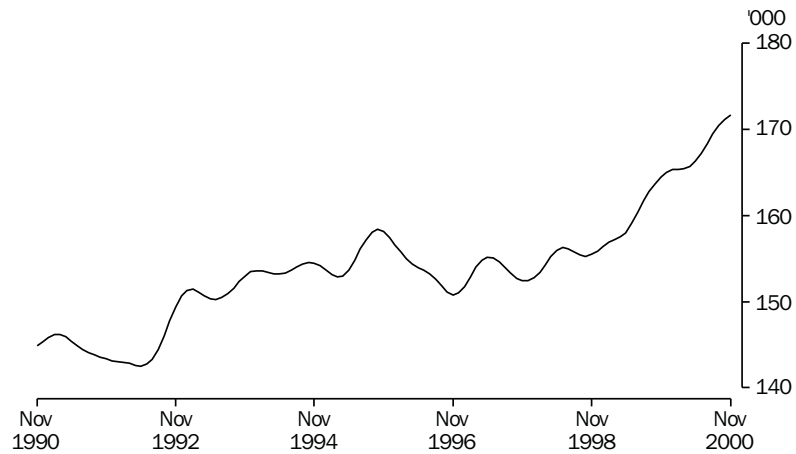
Average duration of unemployment



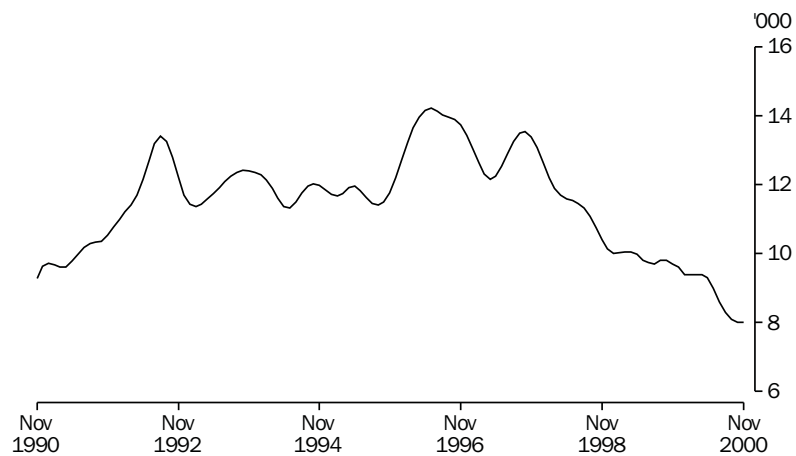
SUMMARY OF FINDINGS—AUSTRALIAN CAPITAL TERRITORY

TREND ESTIMATES

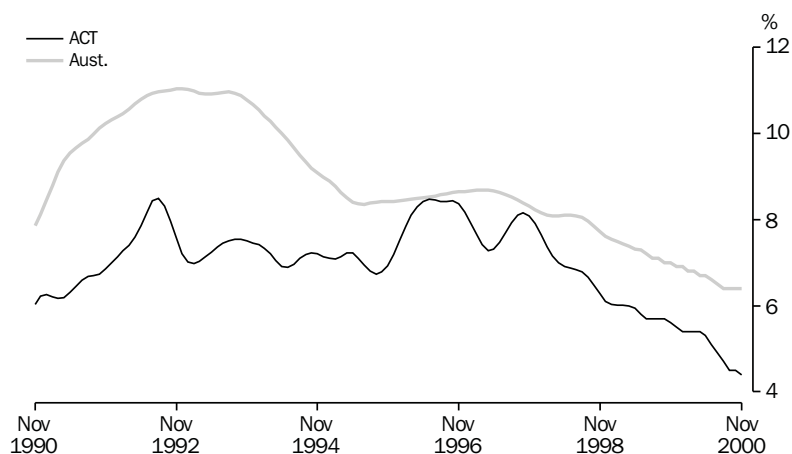
Employed persons The trend estimate of employed persons in the ACT has been rising steadily since October 1998 and in November 2000 was 171,700.



Unemployed persons From a peak of 13,500 in October 1997, the trend estimate of unemployment in the ACT moved gradually downwards. It reached 8,000 in November 2000.



Unemployment rate The trend unemployment rate in the ACT fell steadily since October 1997 to reach 4.4% in November 2000.



Participation rate and labour force The ACT trend participation rate rose gradually throughout the last half of 2000 reaching 73.8% in November 2000. The trend labour force estimate was 179,700 in November 2000.

INDUSTRY AND OCCUPATION

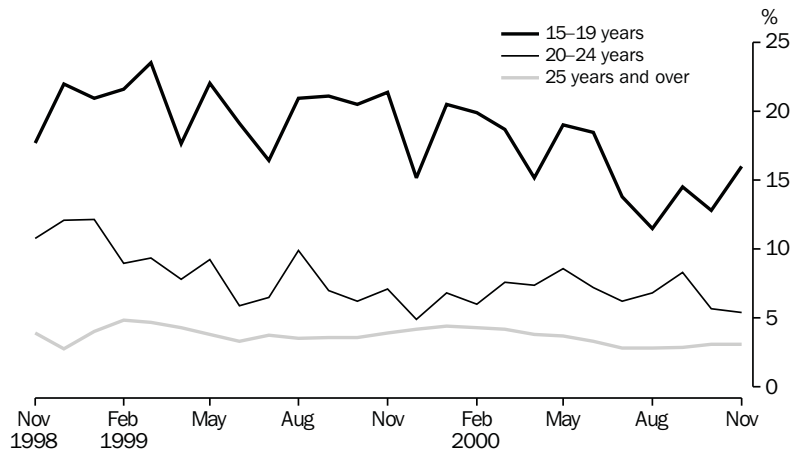
There was an average of 36,600 people employed in Government administration and defence in the ACT for the year ending November 2000, a decrease of 3,100 on the average for the previous year. This industry sector accounted for 21.7% of total employment in the ACT in November 2000. Property and business services accounted for 14.3% of total employment.

For the year ending November 2000, the largest occupation group in the ACT was Professionals. This group had an average of 45,000 employed persons over the year, constituting 26.7% of the total number of employed persons.

AGE

In November 2000, the proportion of employed people working part-time in the ACT ranged from 78.6% of 15–19 year olds to 19.9% of those aged 25 years and over. The average weekly hours worked by employed persons in the age group 15–19 years was 17.1 while those in the age group 25 years and over worked an average of 36.0 hours. The unemployment rates for these age groups was 16.0% and 3.1%, respectively.

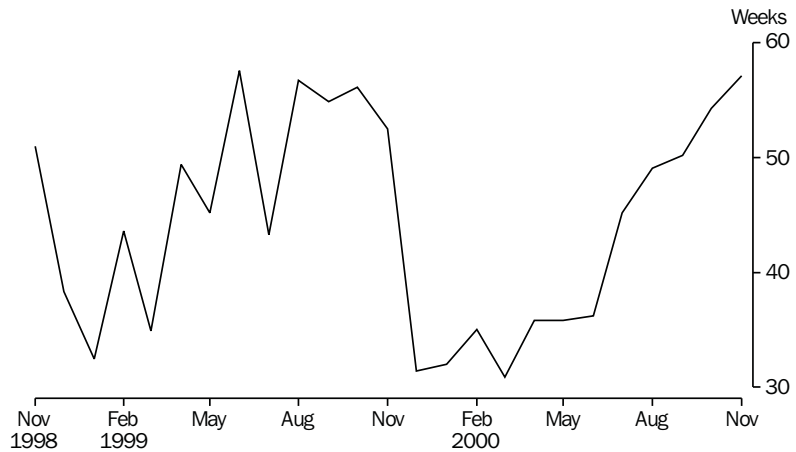
Unemployment rate by age



DURATION OF UNEMPLOYMENT

The average duration of unemployment in the ACT in November 2000 was 57.1 weeks. The average has ranged between 31 and 57 weeks over the past year.

Average duration of unemployment



LIST OF TABLES AND GRAPHS

NEW SOUTH WALES		Page
Tables	Labour force status:	
	1 Original series	13
	2 Seasonally adjusted and trend series	14
	3 Age, November 2000	16
	4 Persons aged 15–24 by full-time educational attendance, November 2000	17
	5 Family status, November 2000	18
Graphs	Labour force status:	
	Trend series, November 1990–November 2000:	
	Employed males	15
	Employed females	15
	Unemployed males	15
	Unemployed females	15
	Male unemployment rate	15
	Female unemployment rate	15
	Male participation rate	15
	Female participation rate	15
Tables	Employed persons:	
	6 Status in employment	18
	7 Age	19
	8 Industry, November 1999 and November 2000	20
	9 Occupation, November 1999 and November 2000	22
Graphs	Employed persons:	
	Annual change in employment by age, November 1999–November 2000	19
	Annual change in employment by industry division, November 1999–November 2000	21
	Annual change in employment by occupation group, November 1999–November 2000	23
Tables	Unemployed persons:	
	10 Age	24
	11 Unemployment rate by age	24
	12 Industry and occupation of last full-time job, November 2000	25
	13 Duration of unemployment	26
	14 Unemployment rate by birthplace and period of arrival	26
	15 Duration of unemployment by age	27
Graphs	Unemployment rate:	
	Unemployment rate by age, November 1998–November 2000	25
	Unemployment rate by period of arrival of overseas born, November 2000	26

Tables	Regional data:	
	Labour force status	
	16 Sydney Major Statistical Region	28
	17 Balance of NSW Major Statistical Region	29
	Employed persons:	
	18 Industry and occupation, Sydney Major Statistical Region and Balance of NSW Major Statistical Region, November 2000	30
	19 Labour force status of regions of NSW and ACT	31
AUSTRALIAN CAPITAL TERRITORY		
Tables	Labour force status:	
	20 Original series	39
	21 Trend series	40
	22 Age, November 2000	42
	23 Non-institutionalised persons, birthplace and year of arrival, November 2000	42
Graphs	Labour force status:	
	Trend series, November 1990–November 2000	
	Employed males	41
	Employed females	41
	Unemployed males	41
	Unemployed females	41
	Male unemployment rate	41
	Female unemployment rate	41
	Male participation rate	41
	Female participation rate	41
Tables	Employed persons:	
	24 Industry, average for year ending November 1999 and November 2000	43
	25 Occupation, average for year ending November 1999 and November 2000	44
	Unemployed persons:	
	26 Long-term unemployment	45
Graphs	Employed persons:	
	Average employment by industry division, year ending November 1999 and November 2000	43
	Average employment by occupation group, year ending November 1999 and November 2000	44
	Unemployed persons:	
	Long-term unemployed as a proportion of total unemployed, November 1999–November 2000	45

TABLE 1. LABOUR FORCE STATUS: ORIGINAL SERIES, NSW

Month	Employed			Unemployed			Labour force ('000)	Not in labour force ('000)	Civilian population aged 15 and over ('000)	Unemployment rate (per cent)	Participation rate (per cent)
	Full-time workers ('000)	Part-time workers ('000)	Total ('000)	Looking for full-time work ('000)	Looking for part-time work ('000)	Total ('000)					
MALES											
November—											
1996	1,416.1	171.9	1,587.9	116.2	16.4	132.6	1,720.5	684.3	2,404.8	7.7	71.5
1997	1,431.3	184.1	1,615.4	117.5	19.1	136.6	1,752.0	685.1	2,437.1	7.8	71.9
1998	1,441.2	191.7	1,633.0	112.0	17.4	129.4	1,762.4	709.1	2,471.5	7.3	71.3
1999—											
September	1,502.7	193.5	1,696.2	97.6	27.2	124.8	1,820.9	681.5	2,502.4	6.9	72.8
October	1,504.7	183.7	1,688.4	87.4	18.2	105.5	1,793.9	712.6	2,506.4	5.9	71.6
November	1,498.9	182.9	1,681.8	81.4	13.7	95.1	1,777.0	733.5	2,510.5	5.4	70.8
2000—											
August	1,492.5	209.2	1,701.7	87.1	14.0	101.2	1,802.8	737.7	2,540.5	5.6	71.0
September	1,519.3	218.7	1,738.0	85.8	20.8	106.6	1,844.6	698.9	2,543.5	5.8	72.5
October	1,506.1	213.2	1,719.3	85.0	16.5	101.5	1,820.9	724.6	2,545.5	5.6	71.5
November	1,489.4	210.8	1,700.1	88.3	16.6	104.8	1,805.0	742.5	2,547.4	5.8	70.9
MARRIED FEMALES											
November—											
1996	400.2	312.3	712.5	17.0	13.8	30.7	743.3	643.3	1,386.6	4.1	53.6
1997	429.4	320.8	750.2	22.1	10.4	32.4	782.6	658.5	1,441.1	4.1	54.3
1998	418.3	322.7	741.0	24.3	13.2	37.5	778.5	667.1	1,445.7	4.8	53.9
1999—											
September	426.0	346.0	772.0	24.4	10.3	34.6	806.6	666.7	1,473.3	4.3	54.7
October	430.0	335.7	765.7	19.6	8.3	27.9	793.6	674.5	1,468.1	3.5	54.1
November	430.2	341.2	771.4	16.5	8.3	24.8	796.1	673.9	1,470.1	3.1	54.2
2000—											
August	452.4	351.0	803.5	14.7	12.6	27.2	830.7	661.6	1,492.3	3.3	55.7
September	465.1	346.9	812.0	15.8	9.3	25.2	837.2	658.7	1,495.9	3.0	56.0
October	446.4	347.2	793.5	14.9	8.9	23.8	817.4	677.5	1,494.9	2.9	54.7
November	453.6	330.9	784.4	15.4	7.3	22.7	807.2	685.6	1,492.8	2.8	54.1
ALL FEMALES											
November—											
1996	732.1	483.8	1,215.9	49.7	32.2	81.9	1,297.8	1,198.8	2,496.5	6.3	52.0
1997	727.5	502.8	1,230.3	61.3	25.7	87.0	1,317.4	1,210.5	2,527.9	6.6	52.1
1998	733.3	502.2	1,235.5	61.0	35.9	96.8	1,332.3	1,227.2	2,559.6	7.3	52.1
1999—											
September	749.9	535.7	1,285.6	61.3	36.3	97.6	1,383.2	1,204.7	2,587.9	7.1	53.4
October	767.2	522.0	1,289.1	51.3	25.8	77.1	1,366.2	1,225.1	2,591.3	5.6	52.7
November	756.5	526.8	1,283.3	50.5	21.3	71.8	1,355.1	1,239.7	2,594.8	5.3	52.2
2000—											
August	787.2	542.3	1,329.4	40.1	32.2	72.3	1,401.7	1,217.6	2,619.3	5.2	53.5
September	805.6	550.8	1,356.4	43.0	30.9	73.9	1,430.3	1,191.7	2,622.0	5.2	54.5
October	784.8	547.7	1,332.5	40.1	27.6	67.7	1,400.2	1,223.3	2,623.5	4.8	53.4
November	787.6	530.5	1,318.1	43.6	27.0	70.6	1,388.7	1,236.2	2,624.9	5.1	52.9
PERSONS											
November—											
1996	2,148.1	655.6	2,803.8	166.0	48.5	214.5	3,018.3	1,883.1	4,901.3	7.1	61.6
1997	2,158.8	686.9	2,845.8	178.8	44.8	223.6	3,069.4	1,895.6	4,965.0	7.3	61.8
1998	2,174.5	693.9	2,868.5	173.0	53.3	226.3	3,094.7	1,936.4	5,031.1	7.3	61.5
1999—											
September	2,252.6	729.2	2,981.8	158.9	63.5	222.4	3,204.2	1,886.2	5,090.3	6.9	62.9
October	2,271.8	705.7	2,977.5	138.6	44.0	182.6	3,160.1	1,937.7	5,097.8	5.8	62.0
November	2,255.4	709.7	2,965.1	131.9	35.0	167.0	3,132.1	1,973.2	5,105.3	5.3	61.4
2000—											
August	2,279.7	751.4	3,031.1	127.2	46.2	173.4	3,204.6	1,955.3	5,159.9	5.4	62.1
September	2,324.9	769.5	3,094.4	128.9	51.7	180.5	3,274.9	1,890.6	5,165.5	5.5	63.4
October	2,290.9	761.0	3,051.8	125.1	44.1	169.2	3,221.1	1,947.9	5,169.0	5.3	62.3
November	2,277.0	741.3	3,018.2	131.9	43.5	175.4	3,193.7	1,978.7	5,172.4	5.5	61.7

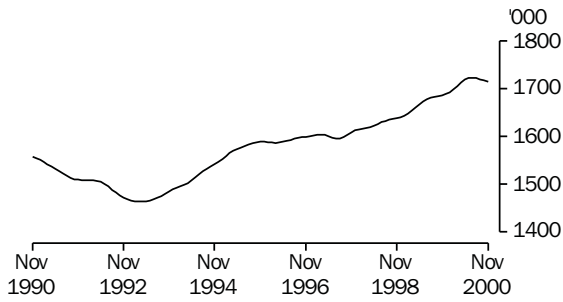
TABLE 2. LABOUR FORCE STATUS: SEASONALLY ADJUSTED AND TREND SERIES, NSW

Month	Seasonally adjusted series					Trend series (a)				
	Employed ('000)	Unemp-loyed ('000)	Labour force ('000)	Unemp-loyment rate (per cent)	Partici-pation rate (per cent)	Employed ('000)	Unemp-loyed ('000)	Labour force ('000)	Unemp-loyment rate (per cent)	Partici-pation rate (per cent)
MALES										
November—										
1996	1,590.9	137.5	1,728.4	8.0	71.9	1,600.1	140.3	1,740.3	8.1	72.4
1997	1,619.4	140.5	1,759.9	8.0	72.2	1,609.3	138.5	1,747.7	7.9	71.7
1998	1,637.1	132.4	1,769.5	7.5	71.6	1,639.0	126.3	1,765.3	7.2	71.4
1999—										
September	1,684.6	121.7	1,806.3	6.7	72.2	1,683.8	112.4	1,796.2	6.3	71.8
October	1,689.0	110.2	1,799.3	6.1	71.8	1,685.5	111.7	1,797.3	6.2	71.7
November	1,686.4	97.0	1,783.4	5.4	71.0	1,686.8	110.8	1,797.6	6.2	71.6
December	1,688.3	118.2	1,806.6	6.5	71.8	1,689.0	109.6	1,798.7	6.1	71.5
2000—										
January	1,685.9	111.5	1,797.5	6.2	71.4	1,692.9	108.3	1,801.2	6.0	71.5
February	1,701.9	103.3	1,805.2	5.7	71.6	1,698.8	107.1	1,805.9	5.9	71.6
March	1,701.6	109.7	1,811.2	6.1	71.8	1,705.8	106.1	1,811.9	5.9	71.8
April	1,715.6	102.7	1,818.3	5.6	71.9	1,712.9	105.0	1,817.9	5.8	71.9
May	1,724.1	100.9	1,825.0	5.5	72.1	1,719.0	103.9	1,822.8	5.7	72.0
June	1,721.3	104.4	1,825.7	5.7	72.0	1,722.6	103.5	1,826.1	5.7	72.0
July	1,725.8	107.9	1,833.6	5.9	72.3	1,723.4	103.9	1,827.2	5.7	72.0
August	1,718.6	101.0	1,819.6	5.6	71.6	1,722.3	104.3	1,826.6	5.7	71.9
September	1,726.0	104.1	1,830.0	5.7	71.9	1,720.2	104.8	1,825.0	5.7	71.8
October	1,719.9	106.1	1,826.0	5.8	71.7	1,717.5	105.4	1,822.9	5.8	71.6
November	1,704.9	106.8	1,811.6	5.9	71.1	1,714.5	105.9	1,820.4	5.8	71.5
FEMALES										
November—										
1996	1,207.0	89.4	1,296.4	6.9	51.9	1,206.8	98.9	1,305.7	7.6	52.3
1997	1,221.0	96.0	1,317.0	7.3	52.1	1,209.1	96.8	1,305.8	7.4	51.7
1998	1,226.3	107.4	1,333.7	8.1	52.1	1,245.8	94.3	1,340.1	7.0	52.4
1999—										
September	1,264.4	96.1	1,360.5	7.1	52.6	1,265.8	86.8	1,352.5	6.4	52.3
October	1,277.9	79.8	1,357.7	5.9	52.4	1,270.7	84.9	1,355.6	6.3	52.3
November	1,274.1	79.9	1,354.0	5.9	52.2	1,276.7	82.9	1,359.7	6.1	52.4
December	1,283.2	81.7	1,364.9	6.0	52.5	1,284.4	81.2	1,365.6	5.9	52.6
2000—										
January	1,288.0	78.0	1,366.0	5.7	52.5	1,293.0	80.8	1,373.8	5.9	52.8
February	1,302.6	83.1	1,385.7	6.0	53.2	1,301.6	81.2	1,382.9	5.9	53.1
March	1,312.3	83.7	1,396.0	6.0	53.6	1,310.2	81.9	1,392.0	5.9	53.4
April	1,322.7	79.0	1,401.7	5.6	53.7	1,318.5	81.7	1,400.3	5.8	53.7
May	1,329.3	84.2	1,413.5	6.0	54.1	1,326.2	80.3	1,406.5	5.7	53.9
June	1,317.1	83.5	1,400.6	6.0	53.6	1,331.4	78.1	1,409.5	5.5	53.9
July	1,334.5	65.5	1,400.0	4.7	53.5	1,333.6	75.9	1,409.5	5.4	53.9
August	1,351.7	77.6	1,429.3	5.4	54.6	1,333.1	74.3	1,407.5	5.3	53.7
September	1,333.7	72.7	1,406.5	5.2	53.6	1,330.7	73.4	1,404.1	5.2	53.6
October	1,320.6	70.2	1,390.7	5.0	53.0	1,326.8	73.2	1,400.0	5.2	53.4
November	1,308.9	78.7	1,387.6	5.7	52.9	1,322.2	73.1	1,395.3	5.2	53.2
PERSONS										
November—										
1996	2,797.9	226.9	3,024.8	7.5	61.7	2,806.8	239.2	3,046.0	7.9	62.1
1997	2,840.4	236.5	3,076.9	7.7	62.0	2,818.3	235.2	3,053.6	7.7	61.5
1998	2,863.4	239.8	3,103.2	7.7	61.7	2,884.8	220.6	3,105.5	7.1	61.7
1999—										
September	2,948.9	217.8	3,166.7	6.9	62.2	2,949.5	199.2	3,148.8	6.3	61.8
October	2,967.0	190.0	3,157.0	6.0	61.9	2,956.3	196.7	3,152.9	6.2	61.8
November	2,960.5	176.9	3,137.4	5.6	61.5	2,963.6	193.7	3,157.3	6.1	61.8
December	2,971.5	199.9	3,171.5	6.3	62.0	2,973.4	190.9	3,164.3	6.0	61.9
2000—										
January	2,974.0	189.5	3,163.4	6.0	61.8	2,985.9	189.1	3,175.0	6.0	62.0
February	3,004.5	186.4	3,190.8	5.8	62.3	3,000.4	188.4	3,188.8	5.9	62.2
March	3,013.9	193.3	3,207.2	6.0	62.5	3,016.0	188.0	3,204.0	5.9	62.5
April	3,038.2	181.8	3,220.0	5.6	62.7	3,031.4	186.7	3,218.2	5.8	62.7
May	3,053.4	185.1	3,238.5	5.7	63.0	3,045.2	184.1	3,229.3	5.7	62.8
June	3,038.4	187.9	3,226.3	5.8	62.7	3,054.0	181.6	3,235.6	5.6	62.8
July	3,060.2	173.4	3,233.6	5.4	62.7	3,057.0	179.8	3,236.7	5.6	62.8
August	3,070.3	178.6	3,248.9	5.5	63.0	3,055.5	178.6	3,234.0	5.5	62.7
September	3,059.7	176.8	3,236.5	5.5	62.7	3,050.9	178.2	3,229.1	5.5	62.5
October	3,040.5	176.2	3,216.7	5.5	62.2	3,044.3	178.6	3,222.8	5.5	62.4
November	3,013.8	185.4	3,199.2	5.8	61.9	3,036.7	179.0	3,215.7	5.6	62.2

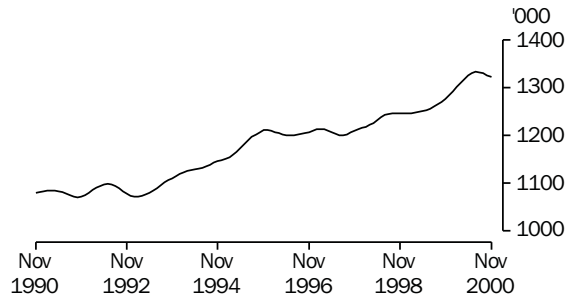
(a) See Explanatory Notes 29 and 30.

TREND SERIES, NSW(a)

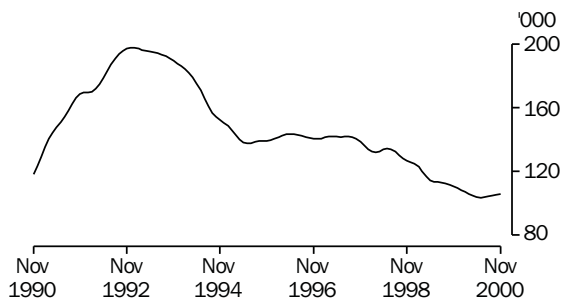
EMPLOYED MALES



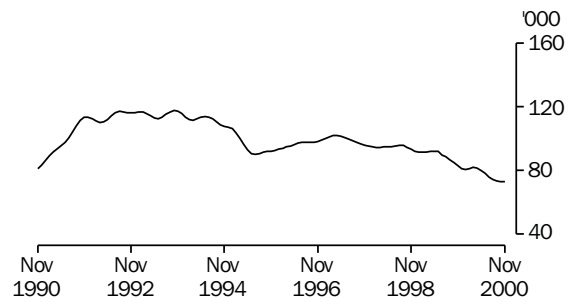
EMPLOYED FEMALES



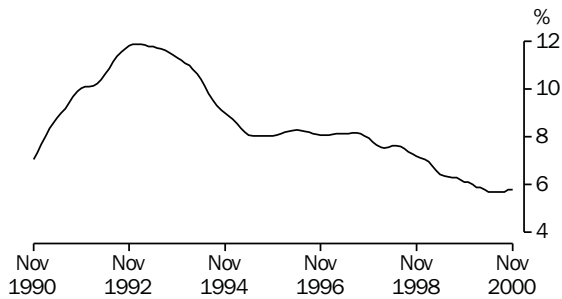
UNEMPLOYED MALES



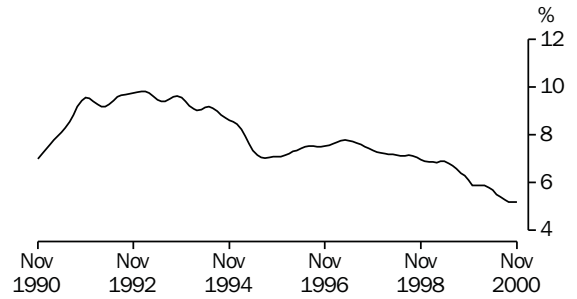
UNEMPLOYED FEMALES



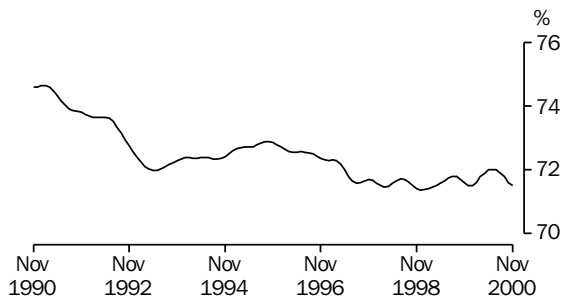
MALE UNEMPLOYMENT RATE



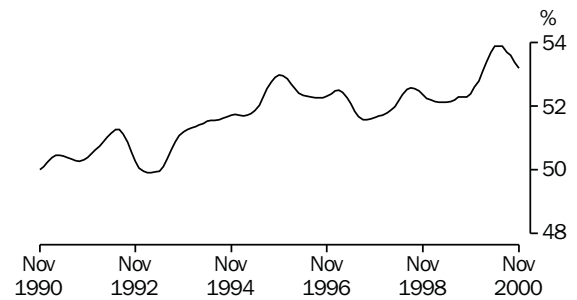
FEMALE UNEMPLOYMENT RATE



MALE PARTICIPATION RATE



FEMALE PARTICIPATION RATE



(a) Comparisons between these graphs should not be made, as their vertical axes are not similarly scaled.

TABLE 3. LABOUR FORCE STATUS: AGE, NSW, NOVEMBER 2000

Age group (years)	Employed			Unemployed			Labour force (<i>'000</i>)	Not in labour force (<i>'000</i>)	Civilian population aged 15 and over (<i>'000</i>)	Unemp- loyment rate (per cent)	Partici- pation rate (per cent)
	Full-time workers (<i>'000</i>)	Part-time workers (<i>'000</i>)	Total (<i>'000</i>)	Looking for full- time work (<i>'000</i>)	Looking for part- time work (<i>'000</i>)	Total (<i>'000</i>)					
MALES											
15-19	43.6	62.0	105.5	12.6	9.2	21.8	127.3	101.1	228.4	17.1	55.7
20-24	138.9	31.5	170.4	15.3	* 2.9	18.1	188.5	38.8	227.4	9.6	82.9
25-34	385.9	31.2	417.1	22.5	* 1.1	23.6	440.7	44.6	485.4	5.4	90.8
35-44	408.9	22.3	431.2	20.4	* 0.7	21.1	452.3	44.6	496.9	4.7	91.0
45-54	341.9	24.5	366.4	12.6	* 1.0	13.5	380.0	60.2	440.1	3.6	86.3
55-59	99.3	14.9	114.2	* 2.6	* 0.4	* 3.0	117.2	51.1	168.3	* 2.5	69.6
60-64	48.1	11.4	59.5	* 2.0	* 1.0	* 3.1	62.6	73.8	136.4	* 4.9	45.9
65 and over	22.8	12.9	35.7	* 0.3	* 0.3	* 0.7	36.3	328.2	364.5	* 1.8	10.0
Total	1,489.4	210.7	1,700.1	88.3	16.6	104.8	1,805.0	742.5	2,547.4	5.8	70.9
MARRIED FEMALES											
15-19	* 1.6	* 0.7	* 2.3	* 0.4	* 0.0	* 0.4	* 2.8	* 1.7	* 4.5	* 15.3	* 61.4
20-24	26.4	7.4	33.8	* 1.0	* 0.7	* 1.7	35.5	18.4	53.9	* 4.9	65.9
25-34	127.6	73.7	201.3	* 4.5	* 0.4	* 4.9	206.2	117.9	324.2	* 2.4	63.6
35-44	134.2	120.5	254.8	* 4.9	* 1.9	6.8	261.6	110.2	371.8	2.6	70.4
45-54	129.7	87.7	217.4	* 3.6	* 2.9	6.5	223.9	104.5	328.4	2.9	68.2
55-59	24.8	26.5	51.3	* 0.4	* 0.7	* 1.0	52.3	66.6	118.9	* 2.0	44.0
60-64	7.0	9.2	16.2	* 0.7	* 0.4	* 1.0	17.2	82.0	99.3	* 5.9	17.4
65 and over	* 2.2	* 5.1	7.3	* 0.0	* 0.3	* 0.3	7.6	184.2	191.8	* 4.3	4.0
Total	453.6	330.9	784.4	15.4	7.3	22.7	807.2	685.6	1,492.8	2.8	54.1
ALL FEMALES											
15-19	28.5	74.7	103.2	7.0	10.7	17.7	120.9	96.9	217.9	14.6	55.5
20-24	111.6	49.3	160.9	6.6	* 2.4	9.0	169.9	51.5	221.5	5.3	76.7
25-34	227.5	95.1	322.6	11.8	* 2.8	14.6	337.2	154.2	491.3	4.3	68.6
35-44	187.3	146.2	333.5	10.7	* 4.5	15.2	348.7	147.0	495.7	4.4	70.4
45-54	181.2	109.2	290.4	* 5.9	* 4.6	10.4	300.8	131.6	432.4	3.5	69.6
55-59	36.3	33.6	69.8	* 1.0	* 1.0	* 2.0	71.8	91.1	163.0	* 2.8	44.1
60-64	9.4	15.0	24.3	* 0.7	* 0.7	* 1.3	25.7	109.8	135.5	* 5.2	19.0
65 and over	* 5.9	7.3	13.2	* 0.0	* 0.3	* 0.3	13.6	454.1	467.7	* 2.4	2.9
Total	787.6	530.5	1,318.1	43.6	27.0	70.6	1,388.7	1,236.2	2,624.9	5.1	52.9
PERSONS											
15-19	72.1	136.7	208.8	19.6	19.9	39.4	248.2	198.1	446.3	15.9	55.6
20-24	250.5	80.8	331.3	21.9	* 5.3	27.1	358.5	90.4	448.8	7.6	79.9
25-34	613.4	126.3	739.7	34.3	* 3.9	38.2	777.9	198.8	976.7	4.9	79.6
35-44	596.2	168.6	764.8	31.1	* 5.2	36.3	801.1	191.5	992.6	4.5	80.7
45-54	523.1	133.7	656.8	18.4	* 5.5	24.0	680.8	191.8	872.6	3.5	78.0
55-59	135.5	48.5	184.0	* 3.6	* 1.4	* 5.0	189.0	142.3	331.3	* 2.6	57.1
60-64	57.5	26.4	83.8	* 2.7	* 1.7	* 4.4	88.2	183.6	271.8	* 5.0	32.5
65 and over	28.7	20.2	48.9	* 0.3	* 0.6	* 1.0	49.9	782.3	832.2	* 2.0	6.0
Total	2,277.0	741.2	3,018.2	131.9	43.5	175.4	3,193.7	1,978.7	5,172.4	5.5	61.7

TABLE 4. LABOUR FORCE STATUS: PERSONS AGED 15-24 BY FULL-TIME EDUCATIONAL ATTENDANCE, NSW, NOVEMBER 2000

Age (years)	Employed			Unemployed			Labour force ('000)	Not in labour force ('000)	Civilian population aged 15 and over ('000)	Unemployment rate (per cent)	Participation rate (per cent)
	Full-time workers ('000)	Part-time workers ('000)	Total ('000)	Looking for full-time work ('000)	Looking for part-time work ('000)	Total ('000)					
ATTENDING SCHOOL OR A TERTIARY EDUCATIONAL INSTITUTION FULL-TIME											
15-19	* 1.5	108.5	110.0	* 0.8	17.8	18.6	128.5	169.0	297.6	14.4	43.2
15	* 0.0	22.7	22.7	* 0.0	8.9	8.9	31.6	51.8	83.4	28.2	37.9
16	* 0.3	28.9	29.2	* 0.3	* 2.9	* 3.2	32.4	45.8	78.2	* 9.9	41.4
17	* 0.0	19.5	19.5	* 0.0	* 2.6	* 2.6	22.2	39.8	62.0	* 12.0	35.7
18	* 0.4	17.3	17.7	* 0.0	* 2.6	* 2.6	20.2	23.3	43.6	* 12.8	46.4
19	* 0.9	20.1	20.9	* 0.5	* 0.7	* 1.2	22.1	8.3	30.4	* 5.3	72.6
20-24	* 4.8	39.4	44.2	* 2.3	* 2.7	* 5.0	49.2	45.6	94.8	* 10.2	51.9
20	* 0.8	12.9	13.6	* 0.8	* 1.0	* 1.8	15.4	14.6	30.1	* 11.7	51.3
21	* 0.7	13.0	13.7	* 0.3	* 0.7	* 1.1	14.7	10.0	24.7	* 7.1	59.6
22	* 2.0	7.0	9.0	* 0.7	* 0.3	* 1.1	10.0	9.3	19.3	* 10.6	51.9
23	* 0.4	* 3.0	* 3.4	* 0.4	* 0.0	* 0.4	* 3.8	6.9	10.8	* 11.2	* 35.6
24	* 1.0	* 3.6	* 4.6	* 0.0	* 0.7	* 0.7	* 5.2	* 4.7	10.0	* 12.9	* 52.5
Total aged 15-24	6.3	147.9	154.2	* 3.0	20.6	23.6	177.8	214.6	392.4	13.3	45.3
NOT ATTENDING SCHOOL OR A TERTIARY EDUCATIONAL INSTITUTION FULL-TIME (a)											
15-19	70.6	28.2	98.8	18.8	* 2.1	20.9	119.7	29.0	148.7	17.4	80.5
15	* 0.7	* 1.0	* 1.6	* 2.0	* 0.0	* 2.0	* 3.6	* 1.2	* 4.8	* 55.2	* 75.3
16	* 2.5	* 2.7	* 5.2	* 1.5	* 0.0	* 1.5	6.7	* 3.7	10.4	* 22.0	64.6
17	8.4	8.0	16.5	* 2.3	* 0.9	* 3.2	19.7	7.8	27.6	* 16.4	71.6
18	24.1	6.9	31.0	* 5.8	* 0.7	6.5	37.5	8.9	46.3	17.3	80.9
19	34.8	9.6	44.5	7.2	* 0.5	7.7	52.1	7.5	59.6	14.7	87.5
20-24	245.7	41.4	287.1	19.6	* 2.5	22.1	309.2	44.8	354.0	7.2	87.4
20	41.4	8.6	50.0	* 3.9	* 0.0	* 3.9	53.9	* 5.7	59.6	* 7.2	90.5
21	40.6	9.0	49.7	6.2	* 0.0	6.2	55.9	8.7	64.5	11.2	86.6
22	46.0	8.3	54.3	* 3.7	* 1.1	* 4.7	59.1	10.7	69.8	* 8.0	84.7
23	60.3	6.2	66.6	* 3.3	* 1.1	* 4.4	71.0	7.9	78.8	* 6.2	90.0
24	57.3	9.3	66.6	* 2.5	* 0.3	* 2.8	69.4	11.9	81.3	* 4.1	85.4
Total aged 15-24	316.2	69.7	385.9	38.4	* 4.6	43.0	428.9	73.8	502.7	10.0	85.3
TOTAL											
15-19	72.1	136.7	208.8	19.6	19.9	39.4	248.2	198.1	446.3	15.9	55.6
15	* 0.7	23.7	24.3	* 2.0	8.9	11.0	35.3	53.0	88.3	31.0	40.0
16	* 2.8	31.6	34.4	* 1.8	* 2.9	* 4.7	39.1	49.5	88.5	* 12.0	44.2
17	8.4	27.5	36.0	* 2.3	* 3.6	* 5.9	41.9	47.7	89.5	* 14.1	46.8
18	24.5	24.1	48.7	* 5.8	* 3.3	9.0	57.7	32.2	89.9	15.7	64.2
19	35.7	29.7	65.4	7.7	* 1.2	8.9	74.2	15.8	90.0	11.9	82.5
20-24	250.5	80.8	331.3	21.9	* 5.3	27.1	358.5	90.4	448.8	7.6	79.9
20	42.2	21.4	63.6	* 4.6	* 1.0	* 5.7	69.3	20.3	89.6	* 8.2	77.3
21	41.3	22.0	63.3	6.6	* 0.7	7.3	70.6	18.6	89.3	10.3	79.1
22	48.0	15.3	63.3	* 4.4	* 1.4	* 5.8	69.1	20.0	89.1	* 8.4	77.6
23	60.8	9.2	70.0	* 3.7	* 1.1	* 4.9	74.8	14.8	89.6	* 6.5	83.5
24	58.3	12.9	71.1	* 2.5	* 1.0	* 3.5	74.6	16.6	91.3	* 4.7	81.8
Total aged 15-24	322.6	217.5	540.1	41.5	25.1	66.6	606.7	288.4	895.1	11.0	67.8

(a) Includes institutionalised persons.

TABLE 5. LABOUR FORCE STATUS: FAMILY STATUS, NSW, NOVEMBER 2000

Family status	Employed			Unemployed			Labour force ('000)	Not in labour force ('000)	Civilian population aged 15 and over ('000)	Unemployment rate (per cent)	Participation rate (per cent)
	Full-time workers ('000)	Part-time workers ('000)	Total ('000)	Looking for full-time work ('000)	Looking for part-time work ('000)	Total ('000)					
<i>Member of a family</i>	1,828.4	637.2	2,465.5	95.7	39.1	134.7	2,600.3	1,469.2	4,069.5	5.2	63.9
Husband	986.2	75.6	1,061.8	25.7	* 3.6	29.3	1,091.1	385.3	1,476.3	2.7	73.9
With children aged 0-14 present	514.6	25.6	540.2	13.7	* 1.8	15.5	555.7	40.1	595.8	2.8	93.3
Without children aged 0-14 present	471.6	50.1	521.7	12.0	* 1.7	13.7	535.4	345.1	880.5	2.6	60.8
With dependants present	599.4	30.0	629.4	16.1	* 1.8	17.9	647.3	54.8	702.1	2.8	92.2
Without dependants present	386.8	45.6	432.4	9.6	* 1.7	11.3	443.8	330.4	774.2	2.6	57.3
Wife	434.2	321.2	755.4	14.7	6.6	21.4	776.8	655.6	1,432.4	2.8	54.2
With children aged 0-14 present	152.1	185.6	337.6	* 5.6	* 3.7	9.3	346.9	224.8	571.7	2.7	60.7
Without children aged 0-14 present	282.1	135.7	417.8	9.1	* 3.0	12.1	429.9	430.8	860.7	2.8	49.9
With dependants present	194.8	215.6	410.4	6.6	* 4.0	10.6	421.0	253.2	674.1	2.5	62.4
Without dependants present	239.4	105.6	345.0	8.2	* 2.6	10.8	355.8	402.4	758.2	3.0	46.9
Not-married male family head	34.6	5.9	40.5	* 3.6	* 0.3	* 3.9	44.4	20.7	65.1	* 8.8	68.2
With children aged 0-14 present	11.1	* 1.1	12.1	* 1.8	* 0.3	* 2.1	14.2	* 3.7	17.9	* 14.5	79.2
Without children aged 0-14 present	23.5	* 4.9	28.3	* 1.9	* 0.0	* 1.9	30.2	17.0	47.2	* 6.1	64.0
With dependants present	16.3	* 3.2	19.4	* 1.8	* 0.3	* 2.1	21.5	6.4	27.9	* 9.6	77.1
Without dependants present	18.3	* 2.8	21.0	* 1.9	* 0.0	* 1.9	22.9	14.3	37.2	* 8.1	61.5
Not-married female family head	57.1	45.0	102.0	8.7	6.3	15.0	117.0	110.7	227.7	12.8	51.4
With children aged 0-14 present	27.0	32.3	59.3	6.7	* 4.9	11.7	71.0	62.8	133.9	16.5	53.1
Without children aged 0-14 present	30.0	12.7	42.7	* 1.9	* 1.3	* 3.3	46.0	47.9	93.8	* 7.1	49.0
With dependants present	37.4	37.2	74.6	8.0	5.9	13.9	88.5	70.4	158.9	15.8	55.7
Without dependants present	19.7	7.8	27.5	* 0.7	* 0.3	* 1.0	28.5	40.3	68.8	* 3.6	41.4
Full-time student aged 15-24 (a)	* 4.5	124.9	129.5	* 1.9	19.5	21.4	150.9	175.5	326.4	14.2	46.2
Other child of family head	282.7	58.6	341.4	37.3	* 1.6	38.9	380.3	70.4	450.6	10.2	84.4
Other relative of family head	29.1	* 5.9	34.9	* 3.8	* 1.1	* 4.9	39.9	51.1	90.9	* 12.4	43.8
<i>Not a member of a family</i>	370.8	76.8	447.6	27.5	* 2.4	29.9	477.5	336.0	813.5	6.3	58.7
Living alone	194.5	35.0	229.5	16.4	* 1.3	17.8	247.2	284.7	531.9	7.2	46.5
Not living alone	176.3	41.8	218.1	11.1	* 1.1	12.2	230.3	51.3	281.6	5.3	81.8
<i>Not family coded</i>	77.8	27.3	105.1	8.7	* 2.1	10.8	115.9	173.5	289.3	9.3	40.0
Total	2,277.0	741.2	3,018.2	131.9	43.5	175.4	3,193.7	1,978.7	5,172.4	5.5	61.7

(a) Excludes persons aged 20-24 attending school.

TABLE 6. EMPLOYED PERSONS: STATUS IN EMPLOYMENT (a), NSW ('000)

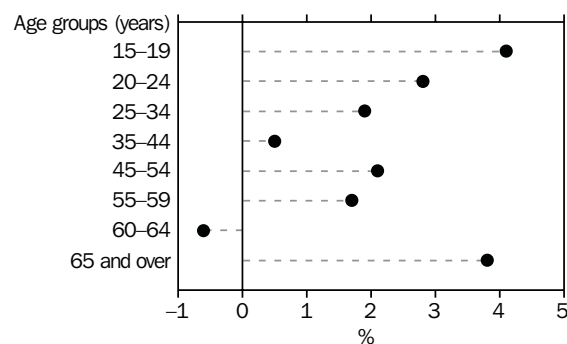
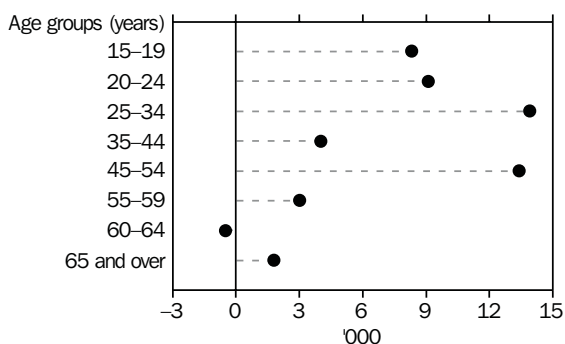
Status in employment	Males			Females			Persons		
	November 1999	August 2000	November 2000	November 1999	August 2000	November 2000	November 1999	August 2000	November 2000
Employees	1,416.0	1,423.7	1,445.5	1,156.7	1,198.8	1,191.2	2,572.8	2,622.6	2,636.8
Employers	83.4	77.2	71.7	34.1	32.7	37.0	117.4	110.0	108.6
Own account workers	176.3	192.0	175.5	79.2	82.6	79.7	255.4	274.6	255.2
Total employed (b)	1,681.8	1,701.7	1,700.1	1,283.3	1,329.4	1,318.1	2,965.1	3,031.1	3,018.2

(a) Status in Employment replaces the previous term Status of Worker. No definitional changes have been made - the only changes are to the classification titles. (b) Includes contributing family workers.

TABLE 7. EMPLOYED PERSONS: AGE, NSW
(*000)

Month	Age group (years)								Total employed
	15-19	20-24	25-34	35-44	45-54	55-59	60-64	65 and over	
MALES									
<i>1999—</i>									
November	103.9	170.3	417.1	426.0	363.9	111.6	58.4	30.8	1,681.8
<i>2000—</i>									
August	98.5	171.7	425.6	435.8	364.0	117.0	55.5	33.6	1,701.7
September	111.7	181.9	427.5	438.6	367.8	114.3	60.0	36.1	1,738.0
October	106.3	180.5	424.7	433.0	368.7	110.8	57.9	37.4	1,719.3
November	105.5	170.4	417.1	431.2	366.4	114.2	59.5	35.7	1,700.1
MARRIED FEMALES									
<i>1999—</i>									
November	* 1.4	39.7	181.3	250.9	217.6	50.9	19.4	10.3	771.4
<i>2000—</i>									
August	* 2.1	36.3	206.8	257.3	222.1	54.6	15.9	8.5	803.5
September	* 2.4	37.5	207.1	261.1	227.5	51.3	14.9	10.1	812.0
October	* 1.7	36.0	202.3	253.5	224.6	53.2	14.3	8.1	793.5
November	* 2.3	33.8	201.3	254.8	217.4	51.3	16.2	7.3	784.4
ALL FEMALES									
<i>1999—</i>									
November	96.6	152.0	308.7	334.8	279.5	69.5	25.8	16.4	1,283.3
<i>2000—</i>									
August	109.0	155.6	329.0	335.2	290.0	73.2	24.8	12.7	1,329.4
September	110.1	161.2	338.0	337.9	298.6	71.6	24.8	14.2	1,356.4
October	107.8	159.0	330.5	331.8	294.3	74.6	22.5	12.0	1,332.5
November	103.2	160.9	322.6	333.5	290.4	69.8	24.3	13.2	1,318.1
PERSONS									
<i>1999—</i>									
November	200.5	322.2	725.8	760.8	643.4	181.0	84.3	47.1	2,965.1
<i>2000—</i>									
August	207.5	327.4	754.6	771.0	653.9	190.2	80.3	46.3	3,031.1
September	221.9	343.1	765.6	776.5	666.4	185.9	84.7	50.3	3,094.4
October	214.1	339.5	755.2	764.8	663.0	185.4	80.4	49.4	3,051.8
November	208.8	331.3	739.7	764.8	656.8	184.0	83.8	48.9	3,018.2

ANNUAL CHANGE IN EMPLOYMENT BY AGE, NSW NOVEMBER 1999 TO NOVEMBER 2000

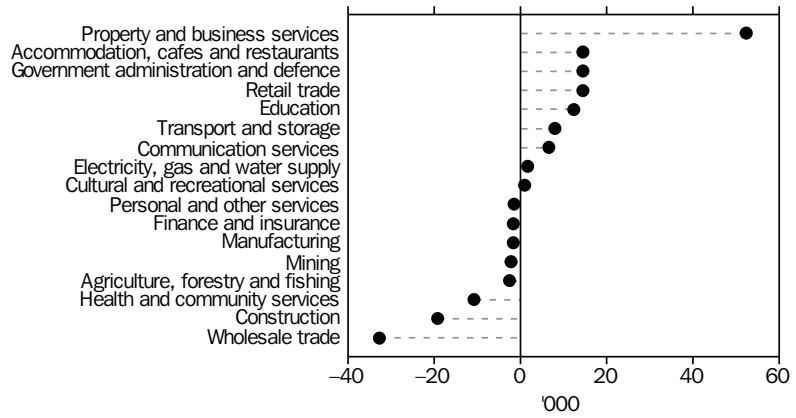


**TABLE 8. EMPLOYED PERSONS: INDUSTRY, NSW
(’000)**

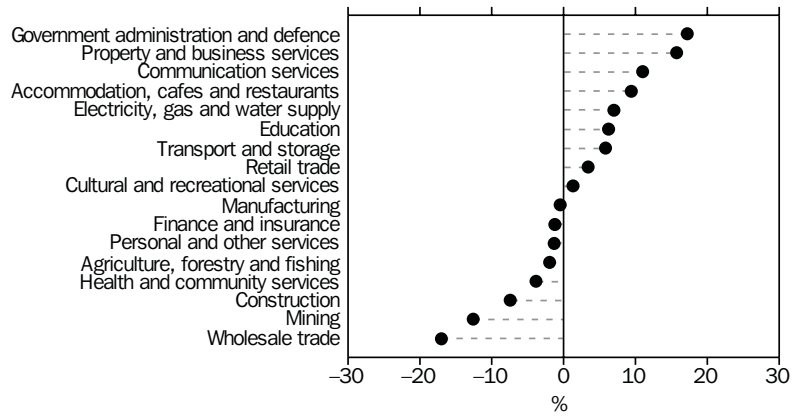
Industry division and subdivision	Males		Females		Persons	
	November 1999	November 2000	November 1999	November 2000	November 1999	November 2000
	<i>Agriculture, forestry and fishing</i>	94.8	86.9	31.5	37.0	126.4
Agriculture	78.6	72.3	28.4	33.1	107.0	105.3
Services to agriculture; hunting and trapping	11.9	7.4	* 2.7	* 3.3	14.6	10.7
Forestry and logging	* 1.5	* 4.2	* 0.0	* 0.3	* 1.5	* 4.5
Commercial fishing	* 2.8	* 3.1	* 0.4	* 0.3	* 3.2	* 3.4
<i>Mining</i>	16.5	14.3	* 1.0	* 1.0	17.5	15.3
Coal mining	11.7	8.5	* 0.4	* 0.3	12.0	8.9
Oil and gas extraction	* 0.0	* 0.0	* 0.0	* 0.0	* 0.0	* 0.0
Metal ore mining	* 2.5	* 2.5	* 0.0	* 0.0	* 2.5	* 2.5
Other mining	* 0.7	* 1.9	* 0.3	* 0.7	* 1.0	* 2.5
Services to mining	* 1.6	* 1.4	* 0.4	* 0.0	* 2.0	* 1.4
<i>Manufacturing</i>	246.7	240.4	103.1	107.7	349.8	348.1
Food, beverage and tobacco manufacturing	34.3	36.4	16.0	17.9	50.3	54.3
Textile, clothing, footwear and leather manufacturing	11.6	9.1	17.6	19.3	29.1	28.4
Wood and paper product manufacturing	17.7	16.8	* 3.7	* 3.9	21.4	20.7
Printing, publishing and recorded media	21.4	26.3	16.4	22.6	37.8	49.0
Petroleum, coal, chemical and associated product manufacturing	23.1	18.0	13.2	13.5	36.4	31.5
Non-metallic mineral product manufacturing	14.9	11.2	* 3.6	* 1.7	18.4	12.8
Metal product manufacturing	47.7	57.0	9.3	7.9	56.9	64.9
Machinery and equipment manufacturing	55.6	49.9	14.7	15.4	70.3	65.3
Other manufacturing	20.4	15.7	8.7	* 5.4	29.1	21.1
<i>Electricity, gas and water supply</i>	18.6	20.2	* 4.1	* 4.2	22.8	24.4
Electricity and gas supply	13.1	13.5	* 2.4	* 3.1	15.5	16.6
Water supply, sewerage and drainage services	* 5.5	6.7	* 1.8	* 1.1	7.3	7.8
<i>Construction</i>	228.8	210.9	29.0	27.7	257.8	238.6
General construction	77.2	76.5	10.3	8.1	87.5	84.6
Construction trade services	151.7	134.4	18.6	19.6	170.3	153.9
<i>Wholesale trade</i>	130.3	108.6	62.1	51.1	192.4	159.7
Basic material wholesaling	29.6	27.4	10.2	12.0	39.9	39.4
Machinery and motor vehicle wholesaling	60.8	42.2	21.6	13.9	82.4	56.1
Personal and household good wholesaling	39.8	39.0	30.3	25.2	70.1	64.2
<i>Retail trade</i>	211.3	214.0	211.6	223.5	422.9	437.4
Food retailing	72.5	70.0	83.3	92.3	155.9	162.2
Personal and household good retailing	76.6	77.2	111.6	116.8	188.3	194.0
Motor vehicle retailing and services	62.1	66.8	16.6	14.3	78.8	81.1
<i>Accommodation, cafes and restaurants</i>	72.1	80.0	82.8	89.5	155.0	169.5
<i>Transport and storage</i>	100.7	112.6	34.6	30.6	135.3	143.2
Road transport	53.5	51.1	10.6	9.5	64.1	60.6
Rail transport	13.3	21.3	* 2.1	* 1.7	15.3	23.0
Water transport	* 1.4	* 4.1	* 1.7	* 0.3	* 3.0	* 4.5
Air and Space transport	17.5	15.2	* 5.1	6.4	22.5	21.6
Other transport	* 0.0	* 0.0	* 0.0	* 0.0	* 0.0	* 0.0
Services to transport	9.8	13.5	13.7	12.0	23.5	25.5
Storage	* 5.4	7.5	* 1.4	* 0.6	6.8	8.1
<i>Communication services</i>	37.6	48.6	22.4	18.0	60.0	66.6
<i>Finance and insurance</i>	70.5	59.3	73.5	83.0	144.0	142.3
Finance	33.0	25.5	39.5	43.4	72.5	68.9
Insurance	15.6	8.8	16.1	18.2	31.7	27.0
Services to finance and insurance	21.9	25.0	17.9	21.3	39.8	46.4
<i>Property and business services</i>	178.0	218.0	155.6	167.8	333.6	385.9
Property services	19.5	28.3	17.3	18.2	36.8	46.5
Business services	158.5	189.8	138.3	149.6	296.8	339.4
<i>Government administration and defence</i>	52.0	54.0	32.4	44.9	84.4	98.9
Government administration	47.7	49.2	30.7	42.2	78.4	91.3
Defence	* 4.3	* 4.8	* 1.7	* 2.7	6.0	7.6
<i>Education</i>	61.1	75.0	139.0	137.3	200.0	212.3
<i>Health and community services</i>	65.2	65.9	215.1	203.6	280.2	269.5
Health services	52.7	51.6	165.1	153.3	217.9	205.0
Community services	12.4	14.3	49.9	50.3	62.4	64.5
<i>Cultural and recreational services</i>	37.3	39.7	34.6	33.1	71.9	72.8
Motion picture, radio and television services	14.9	10.4	12.0	10.1	26.9	20.5
Libraries, museums and the arts	10.2	11.4	10.2	11.2	20.4	22.6
Sport and recreation	12.3	17.8	12.3	11.9	24.6	29.7
<i>Personal and other services</i>	60.3	51.7	50.9	58.0	111.2	109.7
Personal services	20.5	18.0	33.3	37.2	53.8	55.2
Other services	39.4	33.7	17.0	20.8	56.4	54.5
Private households employing staff	* 0.3	* 0.0	* 0.7	* 0.0	* 1.0	* 0.0
Total employed	1,681.8	1,700.1	1,283.3	1,318.1	2,965.1	3,018.2

ANNUAL CHANGE IN EMPLOYMENT BY INDUSTRY DIVISION, NSW, NOVEMBER 1999 TO NOVEMBER 2000

NUMBER



PROPORTION

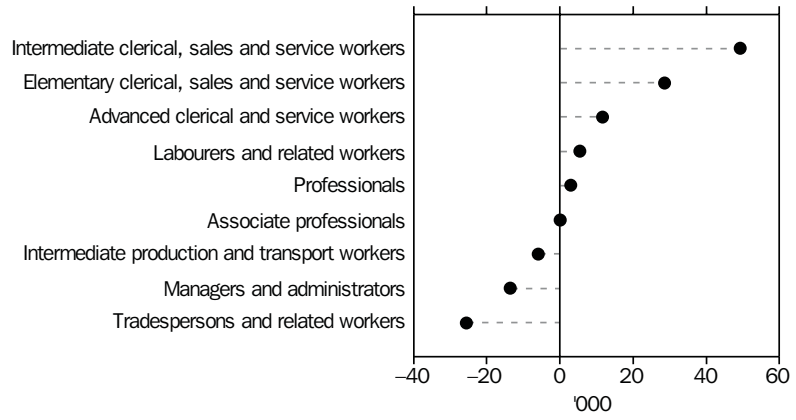


**TABLE 9. EMPLOYED PERSONS: OCCUPATION, NSW
(^{'000})**

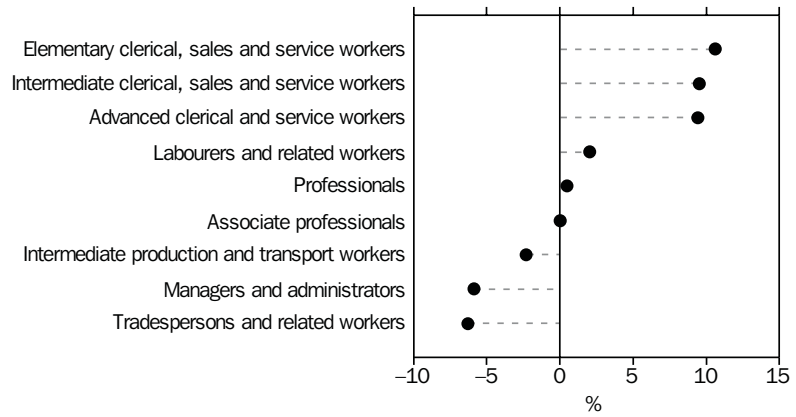
<i>Major and sub-major occupation group</i>	<i>Males</i>		<i>Females</i>		<i>Persons</i>	
	<i>November 1999</i>	<i>November 2000</i>	<i>November 1999</i>	<i>November 2000</i>	<i>November 1999</i>	<i>November 2000</i>
<i>Managers and administrators</i>	181.0	165.7	47.2	49.1	228.3	214.8
Generalist managers	44.7	42.5	* 4.6	6.8	49.3	49.3
Specialist managers	76.7	74.7	24.6	25.5	101.3	100.1
Farmers and farm managers	59.7	48.6	18.0	16.9	77.7	65.4
<i>Professionals</i>	280.1	291.6	286.9	278.5	567.1	570.1
Science, building and engineering professionals	45.3	43.8	6.6	8.1	51.9	51.9
Business and information professionals	110.5	114.0	66.2	68.0	176.7	182.0
Health professionals	31.5	30.7	73.8	74.9	105.3	105.6
Education professionals	40.3	49.6	82.0	86.5	122.3	136.1
Social, arts and miscellaneous professionals	52.5	53.5	58.3	41.0	110.8	94.5
<i>Associate professionals</i>	211.5	209.8	118.7	120.5	330.2	330.2
Science, engineering and related associate professionals	30.4	31.7	11.7	6.5	42.1	38.2
Business and administrative associate professionals	66.1	66.3	41.7	42.0	107.8	108.3
Managing supervisors (sales and service)	91.8	86.9	46.6	55.0	138.4	142.0
Health and welfare associate professionals	* 3.2	* 5.0	10.4	10.4	13.6	15.4
Other associate professionals	20.0	19.9	8.3	6.5	28.3	26.4
<i>Tradespersons and related workers</i>	363.3	342.9	41.0	35.9	404.3	378.8
Mechanical and fabrication engineering tradespersons	57.1	59.8	* 0.8	* 1.0	57.9	60.8
Automotive tradespersons	43.1	42.8	* 0.6	* 0.6	43.7	43.5
Electrical and electronics tradespersons	70.4	65.9	* 0.0	* 0.7	70.4	66.6
Construction tradespersons	103.9	95.2	* 3.5	* 1.0	107.3	96.2
Food tradespersons	20.3	23.3	9.1	8.5	29.3	31.8
Skilled agricultural and horticultural workers	23.5	18.5	* 2.9	* 2.8	26.4	21.3
Other tradespersons and related workers	45.0	37.4	24.2	21.3	69.3	58.8
<i>Advanced clerical and service workers</i>	12.8	17.9	111.2	117.7	124.0	135.6
Secretaries and personal assistants	* 1.1	* 1.0	79.3	75.8	80.4	76.8
Other advanced clerical and service workers	11.7	16.8	31.9	41.9	43.6	58.8
<i>Intermediate clerical, sales and service workers</i>	147.3	169.4	372.3	399.4	519.6	568.8
Intermediate clerical workers	70.8	81.1	241.3	254.3	312.1	335.4
Intermediate sales and related workers	41.5	44.7	17.4	19.3	58.9	64.0
Intermediate service workers	35.0	43.6	113.5	125.8	148.6	169.4
<i>Intermediate production and transport workers</i>	222.3	212.8	29.0	32.5	251.2	245.3
Intermediate plant operators	53.0	53.9	* 4.0	* 3.3	57.0	57.3
Intermediate machine operators	14.5	13.7	6.7	10.6	21.2	24.2
Road and rail transport drivers	91.3	87.7	8.0	6.3	99.3	94.0
Other intermediate production and transport workers	63.5	57.4	10.2	12.4	73.7	69.8
<i>Elementary clerical, sales and service workers</i>	90.2	107.1	178.9	190.5	269.1	297.6
Elementary clerks	7.6	15.7	13.0	15.0	20.5	30.7
Elementary sales workers	63.1	66.0	152.7	159.1	215.8	225.1
Elementary service workers	19.5	25.4	13.2	16.4	32.7	41.9
<i>Labourers and related workers</i>	173.3	183.0	98.2	94.0	271.5	276.9
Cleaners	24.8	32.8	40.5	35.9	65.3	68.7
Factory labourers	42.0	40.0	21.8	25.8	63.8	65.8
Other labourers and related workers	106.5	110.2	35.9	32.2	142.4	142.4
Total employed	1,681.8	1,700.1	1,283.3	1,318.1	2,965.1	3,018.2

ANNUAL CHANGE IN EMPLOYMENT BY OCCUPATION GROUP, NSW, NOVEMBER 1999 TO NOVEMBER 2000

NUMBER



PROPORTION



**TABLE 10. UNEMPLOYED PERSONS: AGE, NSW
(’000)**

Month	Age group (years)						Total unemployed
	15-19	20-24	25-34	35-44	45-54	55 and over	
MALES							
1999—							
November	17.8	15.0	24.6	17.8	10.8	9.1	95.1
2000—							
August	17.7	19.4	23.8	19.9	14.5	6.0	101.2
September	18.9	16.7	25.1	21.3	15.9	8.8	106.6
October	18.4	14.2	24.5	22.2	14.1	8.1	101.5
November	21.8	18.1	23.6	21.1	13.5	6.7	104.8
FEMALES							
1999—							
November	16.5	8.8	16.0	18.0	9.2	* 3.3	71.8
2000—							
August	17.5	10.8	16.5	14.8	10.0	* 2.6	72.3
September	18.8	13.4	14.4	15.1	9.3	* 2.8	73.9
October	16.7	11.4	13.8	15.0	8.1	* 2.7	67.7
November	17.7	9.0	14.6	15.2	10.4	* 3.7	70.6
PERSONS							
1999—							
November	34.3	23.8	40.6	35.8	20.0	12.4	167.0
2000—							
August	35.1	30.2	40.3	34.7	24.5	8.6	173.4
September	37.6	30.1	39.5	36.4	25.2	11.6	180.5
October	35.1	25.6	38.3	37.2	22.2	10.8	169.2
November	39.4	27.1	38.2	36.3	24.0	10.4	175.4

**TABLE 11. UNEMPLOYED PERSONS: UNEMPLOYMENT RATE BY AGE, NSW
(per cent)**

Month	Age group (years)						Total unemployment rate
	15-19	20-24	25-34	35-44	45-54	55 and over	
MALES							
1999—							
November	14.7	8.1	5.6	4.0	2.9	4.3	5.4
2000—							
August	15.2	10.2	5.3	4.4	3.8	2.8	5.6
September	14.4	8.4	5.6	4.6	4.1	4.0	5.8
October	14.7	7.3	5.5	4.9	3.7	3.8	5.6
November	17.1	9.6	5.4	4.7	3.6	3.1	5.8
FEMALES							
1999—							
November	14.6	5.5	4.9	5.1	3.2	* 2.9	5.3
2000—							
August	13.8	6.5	4.8	4.2	3.3	* 2.3	5.2
September	14.6	7.7	4.1	4.3	3.0	* 2.5	5.2
October	13.4	6.7	4.0	4.3	2.7	* 2.4	4.8
November	14.6	5.3	4.3	4.4	3.5	* 3.3	5.1
PERSONS							
1999—							
November	14.6	6.9	5.3	4.5	3.0	3.8	5.3
2000—							
August	14.5	8.5	5.1	4.3	3.6	2.6	5.4
September	14.5	8.1	4.9	4.5	3.6	3.5	5.5
October	14.1	7.0	4.8	4.6	3.2	3.3	5.3
November	15.9	7.6	4.9	4.5	3.5	3.2	5.5

TABLE 12. UNEMPLOYED PERSONS: INDUSTRY AND OCCUPATION OF LAST FULL-TIME JOB, NSW, NOVEMBER 2000
(’000)

	Males	Females	Persons
<i>Had worked for two weeks or more in a full-time job in the last two years</i>	54.0	21.2	75.2
Industry division—			
Agriculture, forestry and fishing	* 2.1	* 1.0	* 3.1
Manufacturing	11.4	* 2.3	13.7
Construction	11.6	* 0.0	11.6
Wholesale trade	* 2.1	* 2.0	* 4.0
Retail trade	6.8	* 3.8	10.7
Accommodation, cafes and restaurants	* 0.7	* 2.7	* 3.4
Transport and storage	* 1.4	* 0.0	* 1.4
Finance and insurance	* 1.8	* 0.6	* 2.4
Property and business services	6.5	* 2.4	8.9
Education	* 0.4	* 1.6	* 1.9
Health and community services	* 0.7	* 2.8	* 3.5
Cultural and recreational services	* 2.7	* 1.0	* 3.6
Personal and other services	* 1.0	* 0.0	* 1.0
Other industries	* 4.8	* 1.0	* 5.9
Major occupation group—			
Managers and administrators	* 1.4	* 0.0	* 1.4
Professionals	* 2.8	* 2.4	* 5.2
Associate professionals	* 3.8	* 2.6	6.4
Tradespersons and related workers	14.3	* 0.3	14.7
Advanced clerical and service workers	* 0.3	* 0.7	* 1.0
Intermediate clerical, sales and service workers	* 3.6	6.0	9.6
Intermediate production and transport workers	7.5	* 1.0	8.5
Elementary clerical, sales and service workers	* 3.6	* 4.2	7.8
Labourers and related workers	16.7	* 4.0	20.7
<i>Had not worked full-time for two weeks or more in the last two years</i>	49.1	46.6	95.7
Looking for first job	11.4	13.0	24.4
Had worked at some time in the past	37.7	33.6	71.3
<i>Stood down</i>	* 1.7	* 2.7	* 4.5
Total unemployed	104.8	70.6	175.4

UNEMPLOYMENT RATE BY AGE, NSW

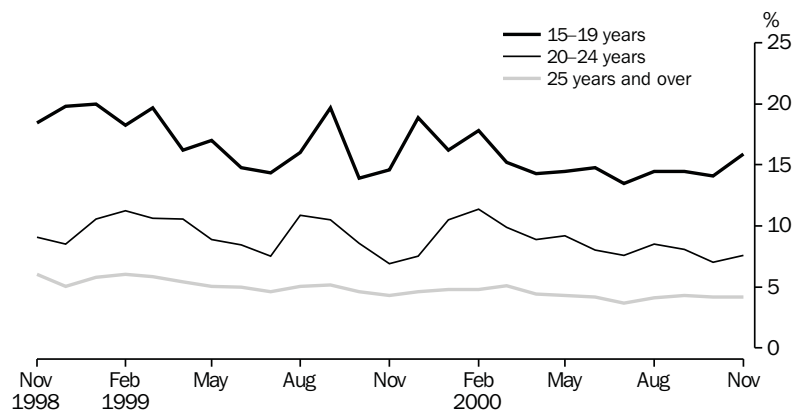


TABLE 13. UNEMPLOYED PERSONS: DURATION OF UNEMPLOYMENT, NSW

Duration of unemployment (weeks)	Males		Females		Persons				
	November 1999	November 2000	November 1999	November 2000	November 1999	August 2000	September 2000	October 2000	November 2000
	— '000 —								
<i>Under 52</i>	60.2	75.7	56.5	56.2	116.7	124.1	127.0	122.0	132.0
Under 2	7.3	8.9	6.4	12.3	13.7	16.7	21.6	13.3	21.2
2 and under 4	* 4.9	8.8	7.1	9.4	12.1	20.2	18.4	22.5	18.3
4 and under 8	11.0	14.6	8.7	8.9	19.7	26.3	22.4	21.2	23.5
8 and under 13	9.5	10.4	7.6	7.2	17.1	15.8	18.7	16.3	17.6
13 and under 26	11.0	16.6	11.0	8.8	22.0	21.0	18.3	21.6	25.5
26 and under 39	9.7	9.7	11.4	* 5.4	21.1	21.5	20.7	17.6	15.1
39 and under 52	6.8	6.7	* 4.3	* 4.1	11.0	* 2.5	7.0	9.5	10.7
<i>52 and over</i>	34.9	29.1	15.3	14.4	50.2	49.4	53.5	47.2	43.5
52 and under 104	9.8	7.7	6.1	* 5.5	15.9	18.0	16.9	20.2	13.2
104 and over	25.1	21.5	9.2	8.8	34.3	31.4	36.6	27.0	30.3
Total unemployed	95.1	104.8	71.8	70.6	167.0	173.4	180.5	169.2	175.4
	— Weeks —								
Average	63.1	59.1	41.7	35.6	53.9	52.8	56.4	49.7	49.7
Median	26	17	17	10	24	16	16	16	14

TABLE 14. UNEMPLOYED PERSONS: UNEMPLOYMENT RATE BY BIRTHPLACE AND PERIOD OF ARRIVAL, NSW (per cent)

	November 1999	August 2000	September 2000	October 2000	November 2000
Birthplace—					
<i>Australia</i>	5.4	5.4	5.6	5.1	5.4
<i>Outside Australia</i>	5.2	5.5	5.3	5.7	5.7
Main English speaking countries	4.2	3.3	3.1	4.3	4.2
Other countries	5.7	6.6	6.4	6.4	6.4
Period of arrival of overseas born—					
Before 1961	* 3.4	* 3.9	* 3.5	* 3.4	* 4.7
1961-1970	3.8	* 3.2	* 2.7	* 2.7	* 2.8
1971-1980	4.6	4.3	4.4	5.3	5.2
1981-1985	9.4	* 3.7	* 4.3	6.7	6.9
1986-1990	* 2.8	6.3	5.7	5.8	5.5
1991 to survey date	7.2	8.3	8.1	7.2	6.9
Total unemployment rate	5.3	5.4	5.5	5.3	5.5

UNEMPLOYMENT RATE BY PERIOD OF ARRIVAL OF OVERSEAS BORN, NSW—NOVEMBER 2000

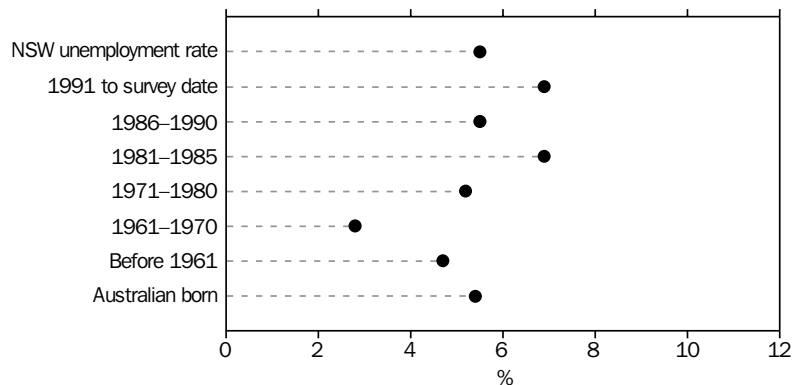


TABLE 15. UNEMPLOYED PERSONS: DURATION OF UNEMPLOYMENT BY AGE, NSW

Month	Duration of unemployment (weeks)					Total unemployed persons ('000)	Average duration (weeks)	Median duration (weeks)
	Under 13 ('000)	13 and under 26 ('000)	26 and under 39 ('000)	39 and under 104 ('000)	104 and over ('000)			
15 19								
1999—								
November	18.8	* 3.4	6.0	* 5.1	* 1.1	34.3	22.1	9
2000—								
September	21.0	* 5.0	* 5.0	* 5.2	* 1.4	37.6	22.7	8
October	16.7	* 5.0	6.0	* 5.8	* 1.6	35.1	26.9	13
November	23.5	* 4.2	* 3.9	6.7	* 1.2	39.4	20.5	8
20 24								
1999—								
November	8.1	* 4.2	* 1.9	* 5.3	* 4.2	23.8	54.7	20
2000—								
September	14.4	* 2.2	* 4.2	* 3.6	* 5.7	30.1	47.3	17
October	10.0	* 3.6	* 1.5	* 5.8	* 4.7	25.6	61.2	20
November	11.8	* 4.2	* 2.6	* 3.2	* 5.4	27.1	48.8	18
25 34								
1999—								
November	14.9	6.6	6.2	* 3.8	9.1	40.6	57.3	17
2000—								
September	19.1	* 4.4	* 4.3	* 3.9	7.9	39.5	47.8	13
October	17.0	7.6	* 3.6	6.1	* 4.1	38.3	42.1	14
November	17.4	6.3	* 3.3	* 3.6	7.6	38.2	50.5	13
35 44								
1999—								
November	12.9	* 3.7	* 5.4	* 4.5	9.4	35.8	59.0	26
2000—								
September	13.6	* 3.5	* 3.7	* 5.1	10.5	36.4	84.6	28
October	16.5	* 3.3	* 3.7	* 5.7	8.0	37.2	61.9	18
November	14.2	6.5	* 3.4	* 3.5	8.8	36.3	72.0	17
45 AND OVER								
1999—								
November	7.9	* 4.1	* 1.7	8.2	10.5	32.4	77.1	46
2000—								
September	12.9	* 3.3	* 3.5	6.1	11.0	36.8	79.4	34
October	13.1	* 2.0	* 3.0	6.4	8.6	33.0	60.2	30
November	13.8	* 4.3	* 1.9	6.9	7.4	34.3	59.2	22
TOTAL								
1999—								
November	62.5	22.0	21.1	27.0	34.3	167.0	53.9	24
2000—								
September	81.0	18.3	20.7	23.9	36.6	180.5	56.4	16
October	73.2	21.6	17.6	29.7	27.0	169.2	49.7	16
November	80.6	25.5	15.1	23.9	30.3	175.4	49.7	14

TABLE 16. LABOUR FORCE STATUS, SYDNEY (MSR)

Month	Employed			Unemployed			Labour force ('000)	Unemployment rate (per cent)	Participation rate (per cent)
	Full-time workers ('000)	Part-time workers ('000)	Total ('000)	Looking for full-time work ('000)	Looking for part-time work ('000)	Total ('000)			
MALES									
<i>November—</i>									
1996	933.8	108.2	1,041.9	60.9	9.6	70.5	1,112.5	6.3	73.2
1997	954.4	113.3	1,067.6	61.2	11.7	72.9	1,140.5	6.4	73.9
1998	955.3	118.5	1,073.8	58.9	10.0	68.9	1,142.7	6.0	73.0
<i>1999—</i>									
September	997.7	124.8	1,122.5	51.7	15.5	67.3	1,189.7	5.7	75.0
October	997.1	119.3	1,116.4	42.5	10.8	53.3	1,169.7	4.6	73.6
November	993.2	115.6	1,108.8	38.3	7.8	46.1	1,154.9	4.0	72.5
<i>2000—</i>									
August	997.4	128.9	1,126.2	45.0	9.3	54.3	1,180.5	4.6	73.2
September	1,015.6	132.6	1,148.2	42.1	11.6	53.7	1,201.9	4.5	74.4
October	1,009.9	127.2	1,137.1	45.2	8.4	53.6	1,190.6	4.5	73.7
November	990.1	133.7	1,123.8	45.1	9.8	54.9	1,178.7	4.7	72.9
MARRIED FEMALES									
<i>November—</i>									
1996	271.7	186.5	458.2	8.7	10.2	18.9	477.0	4.0	55.5
1997	295.7	191.2	486.9	11.6	6.3	17.9	504.8	3.5	56.2
1998	283.1	198.4	481.4	12.9	8.4	21.3	502.7	4.2	55.9
<i>1999—</i>									
September	288.2	202.4	490.5	12.7	6.0	18.7	509.2	3.7	55.1
October	287.8	201.0	488.8	9.1	* 4.6	13.8	502.5	2.7	54.6
November	284.9	204.4	489.4	7.7	* 4.3	12.0	501.4	2.4	54.4
<i>2000—</i>									
August	312.5	212.1	524.6	9.5	6.8	16.3	541.0	3.0	57.3
September	317.7	214.0	531.7	10.3	6.5	16.7	548.5	3.0	58.2
October	302.8	211.6	514.4	9.6	* 5.0	14.6	528.9	2.8	56.3
November	312.6	202.2	514.8	9.6	* 4.8	14.5	529.3	2.7	56.3
ALL FEMALES									
<i>November—</i>									
1996	516.6	295.8	812.5	25.9	21.6	47.5	860.0	5.5	54.2
1997	525.0	308.4	833.4	32.7	14.8	47.6	880.9	5.4	54.8
1998	524.0	309.9	833.9	31.3	18.8	50.1	883.9	5.7	54.2
<i>1999—</i>									
September	541.1	321.6	862.7	26.2	20.2	46.4	909.1	5.1	55.1
October	551.3	309.5	860.7	23.0	15.6	38.6	899.3	4.3	54.4
November	540.7	317.1	857.8	22.8	11.3	34.1	892.0	3.8	53.9
<i>2000—</i>									
August	562.1	329.5	891.6	20.6	16.5	37.2	928.8	4.0	55.6
September	573.2	339.7	912.9	20.8	18.2	39.0	951.8	4.1	56.9
October	558.6	328.8	887.4	23.3	14.1	37.4	924.8	4.0	55.3
November	560.5	321.0	881.6	24.9	14.2	39.1	920.6	4.2	55.0
PERSONS									
<i>November—</i>									
1996	1,450.4	404.0	1,854.4	86.8	31.2	118.1	1,972.5	6.0	63.5
1997	1,479.4	421.7	1,901.0	94.0	26.5	120.4	2,021.5	6.0	64.1
1998	1,479.3	428.3	1,907.6	90.1	28.8	118.9	2,026.6	5.9	63.4
<i>1999—</i>									
September	1,538.7	446.4	1,985.1	77.9	35.8	113.7	2,098.8	5.4	64.9
October	1,548.3	428.8	1,977.1	65.5	26.4	91.9	2,069.0	4.4	63.8
November	1,533.9	432.7	1,966.6	61.1	19.2	80.2	2,046.8	3.9	63.1
<i>2000—</i>									
August	1,559.5	458.4	2,017.8	65.6	25.8	91.4	2,109.3	4.3	64.2
September	1,588.8	472.3	2,061.1	62.9	29.8	92.7	2,153.8	4.3	65.5
October	1,568.5	456.0	2,024.5	68.5	22.5	91.0	2,115.5	4.3	64.3
November	1,550.6	454.7	2,005.4	70.0	24.0	94.0	2,099.4	4.5	63.8

TABLE 17. LABOUR FORCE STATUS, BALANCE OF NSW (MSR)

Month	Employed			Unemployed			Labour force ('000)	Unemployment rate (per cent)	Participation rate (per cent)
	Full-time workers ('000)	Part-time workers ('000)	Total ('000)	Looking for full-time work ('000)	Looking for part-time work ('000)	Total ('000)			
MALES									
<i>November—</i>									
1996	482.3	63.7	546.0	55.3	6.8	62.1	608.0	10.2	68.7
1997	477.0	70.8	547.8	56.3	7.4	63.7	611.5	10.4	68.4
1998	485.9	73.3	559.2	53.1	7.4	60.6	619.8	9.8	68.4
<i>1999—</i>									
September	505.0	68.7	573.7	45.9	11.6	57.5	631.2	9.1	68.9
October	507.6	64.3	572.0	44.9	7.4	52.2	624.2	8.4	68.1
November	505.8	67.3	573.1	43.2	5.9	49.0	622.1	7.9	67.7
<i>2000—</i>									
August	495.2	80.3	575.4	42.1	* 4.8	46.9	622.3	7.5	67.1
September	503.7	86.1	589.7	43.7	9.2	52.9	642.7	8.2	69.2
October	496.2	86.0	582.2	39.8	8.1	48.0	630.2	7.6	67.8
November	499.3	77.0	576.3	43.2	6.7	49.9	626.2	8.0	67.3
MARRIED FEMALES									
<i>November—</i>									
1996	128.5	125.9	254.4	8.3	* 3.6	11.9	266.2	4.5	50.5
1997	133.6	129.6	263.3	10.5	* 4.1	14.6	277.8	5.2	51.2
1998	135.3	124.3	259.6	11.4	* 4.4	16.2	275.8	5.9	50.5
<i>1999—</i>									
September	137.8	143.6	281.5	11.7	* 4.2	15.9	297.4	5.4	54.1
October	142.2	134.7	276.9	10.4	* 3.7	14.1	291.1	4.9	53.1
November	145.3	136.7	282.0	8.8	* 4.0	12.8	294.8	4.3	53.8
<i>2000—</i>									
August	140.0	138.9	278.8	* 5.2	5.7	10.9	289.7	3.8	52.8
September	147.4	132.9	280.3	* 5.6	* 2.9	8.4	288.7	2.9	52.1
October	143.6	135.6	279.2	* 5.4	* 3.9	9.2	288.4	3.2	51.9
November	140.9	128.7	269.6	5.8	* 2.5	8.3	277.9	3.0	50.3
ALL FEMALES									
<i>November—</i>									
1996	215.5	187.9	403.4	23.8	10.5	34.4	437.8	7.8	48.1
1997	202.5	194.5	397.0	28.6	10.9	39.5	436.4	9.0	47.5
1998	209.3	192.3	401.6	29.7	17.1	46.8	448.4	10.4	48.2
<i>1999—</i>									
September	208.8	214.1	422.9	35.1	16.1	51.2	474.1	10.8	50.5
October	215.9	212.5	428.4	28.3	10.2	38.5	466.9	8.2	49.7
November	215.7	209.7	425.4	27.7	10.0	37.7	463.1	8.1	49.2
<i>2000—</i>									
August	225.1	212.8	437.8	19.5	15.7	35.1	473.0	7.4	49.8
September	232.4	211.1	443.6	22.3	12.6	34.9	478.5	7.3	50.4
October	226.1	219.0	445.1	16.8	13.5	30.3	475.4	6.4	50.0
November	227.0	209.5	436.5	18.7	12.8	31.5	468.0	6.7	49.2
PERSONS									
<i>November—</i>									
1996	697.8	251.6	949.4	79.1	17.3	96.4	1,045.8	9.2	58.2
1997	679.5	265.3	944.7	84.9	18.3	103.2	1,047.9	9.8	57.8
1998	695.3	265.6	960.8	82.8	24.5	107.3	1,068.2	10.0	58.2
<i>1999—</i>									
September	713.8	282.8	996.6	81.0	27.7	108.7	1,105.3	9.8	59.6
October	723.5	276.8	1,000.4	73.2	17.5	90.7	1,091.1	8.3	58.8
November	721.5	277.0	998.5	70.9	15.9	86.7	1,085.2	8.0	58.4
<i>2000—</i>									
August	720.2	293.0	1,013.3	61.6	20.4	82.0	1,095.3	7.5	58.4
September	736.1	297.2	1,033.3	66.0	21.9	87.8	1,121.1	7.8	59.7
October	722.4	305.0	1,027.4	56.6	21.6	78.2	1,105.6	7.1	58.8
November	726.3	286.5	1,012.8	61.9	19.5	81.4	1,094.3	7.4	58.1

**TABLE 18. EMPLOYED PERSONS: INDUSTRY AND OCCUPATION
SYDNEY (MSR) AND BALANCE OF NSW (MSR), NOVEMBER 2000
(*000)**

<i>Industry division and Major occupation group</i>	<i>Males</i>	<i>Females</i>	<i>Persons</i>
SYDNEY (MSR)			
Industry—			
Agriculture, forestry and fishing	* 4.8	* 3.5	8.3
Mining	* 2.0	* 0.7	* 2.7
Manufacturing	152.1	86.6	238.7
Electricity, gas and water supply	12.3	* 3.1	15.4
Construction	154.5	21.6	176.1
Wholesale trade	81.4	40.5	121.9
Retail trade	131.2	127.7	259.0
Accommodation, cafes and restaurants	55.4	50.2	105.5
Transport and storage	77.5	20.4	97.9
Communication services	37.7	15.5	53.2
Finance and insurance	52.2	69.9	122.1
Property and business services	173.6	136.8	310.4
Government administration and defence	28.9	29.8	58.7
Education	46.6	85.9	132.5
Health and community services	48.5	126.2	174.7
Cultural and recreational services	31.6	26.4	58.0
Personal and other services	33.6	36.6	70.2
Occupation—			
Managers and administrators	94.5	26.5	121.0
Professionals	221.6	199.3	420.8
Associate professionals	149.4	81.0	230.4
Tradespersons and related workers	219.5	19.0	238.5
Advanced clerical and service workers	12.6	88.5	101.1
Intermediate clerical, sales and service workers	124.3	275.5	399.9
Intermediate production and transport workers	126.4	20.5	146.8
Elementary clerical, sales and service workers	74.2	114.1	188.3
Labourers and related workers	101.4	57.1	158.5
Total employed	1,123.8	881.6	2,005.4
BALANCE OF NSW (MSR)			
Industry—			
Agriculture, forestry and fishing	82.1	33.5	115.6
Mining	12.2	* 0.3	12.6
Manufacturing	88.4	21.1	109.4
Electricity, gas and water supply	7.9	* 1.1	9.0
Construction	56.4	6.1	62.5
Wholesale trade	27.2	10.6	37.9
Retail trade	82.7	95.7	178.4
Accommodation, cafes and restaurants	24.6	39.4	64.0
Transport and storage	35.1	10.2	45.3
Communication services	10.9	* 2.5	13.4
Finance and insurance	7.1	13.1	20.2
Property and business services	44.4	31.0	75.4
Government administration and defence	25.1	15.1	40.2
Education	28.4	51.4	79.8
Health and community services	17.4	77.3	94.8
Cultural and recreational services	8.1	6.7	14.8
Personal and other services	18.1	21.4	39.5
Occupation—			
Managers and administrators	71.2	22.6	93.9
Professionals	70.1	79.2	149.3
Associate professionals	60.4	39.4	99.8
Tradespersons and related workers	123.4	16.9	140.3
Advanced clerical and service workers	* 5.3	29.2	34.5
Intermediate clerical, sales and service workers	45.0	123.9	168.9
Intermediate production and transport workers	86.4	12.1	98.5
Elementary clerical, sales and service workers	32.9	76.4	109.3
Labourers and related workers	81.6	36.8	118.4
Total employed	576.3	436.5	1,012.8

TABLE 19. LABOUR FORCE STATUS (a), REGIONS OF NSW AND ACT

	<i>Month</i>	<i>Employed</i> (<i>'000</i>)	<i>Unemployed</i> (<i>'000</i>)	<i>Labour</i> <i>force</i> (<i>'000</i>)	<i>Unemp-</i> <i>loyment</i> <i>rate</i> (<i>per cent</i>)	<i>Partici-</i> <i>ipation</i> <i>rate</i> (<i>per cent</i>)
INNER SYDNEY AND INNER WESTERN SYDNEY (SRs)						
MALES	1999— November	131.1	6.2	137.2	4.5	70.6
	2000— September	137.1	5.9	143.0	4.1	74.0
	October	144.7	6.5	151.2	4.3	75.7
	November	133.4	4.9	138.3	3.5	72.7
FEMALES	1999— November	114.2	* 3.4	117.7	* 2.9	62.9
	2000— September	119.0	* 4.3	123.2	* 3.5	63.5
	October	125.6	4.5	130.2	3.5	62.8
	November	111.3	* 3.8	115.1	* 3.3	57.5
PERSONS	1999— November	245.3	9.6	254.9	3.8	66.8
	2000— September	256.1	10.1	266.2	3.8	68.7
	October	270.3	11.1	281.4	3.9	69.2
	November	244.7	8.6	253.3	3.4	64.9
INNER SYDNEY (SR)						
MALES	1999— November	85.1	* 3.6	88.8	* 4.1	71.0
	2000— September	82.3	4.5	86.8	5.2	73.8
	October	89.4	5.5	94.8	5.8	77.1
	November	85.9	3.8	89.7	4.2	75.5
FEMALES	1999— November	69.2	* 2.4	71.6	* 3.4	61.3
	2000— September	74.3	* 3.6	77.9	* 4.6	65.1
	October	80.3	3.9	84.2	4.6	65.1
	November	75.0	* 2.9	77.9	* 3.7	62.7
PERSONS	1999— November	154.3	6.1	160.4	3.8	66.3
	2000— September	156.6	8.1	164.7	4.9	69.4
	October	169.6	9.4	179.0	5.2	71.0
	November	160.9	6.7	167.6	4.0	68.9
EASTERN SUBURBS (SR)						
MALES	1999— November	73.4	* 1.1	74.5	* 1.5	72.2
	2000— September	73.5	2.5	76.0	3.2	74.5
	October	75.0	* 2.1	77.1	* 2.7	71.9
	November	78.3	2.5	80.9	3.1	74.3
FEMALES	1999— November	56.6	3.5	60.2	5.9	57.3
	2000— September	61.6	* 0.7	62.3	* 1.1	63.3
	October	59.4	* 1.1	60.5	* 1.8	60.7
	November	62.2	* 0.7	62.9	* 1.0	59.6
PERSONS	1999— November	130.0	4.6	134.6	3.4	64.7
	2000— September	135.1	3.1	138.3	2.3	69.0
	October	134.4	3.2	137.6	2.3	66.5
	November	140.5	3.2	143.7	2.2	67.0

TABLE 19. LABOUR FORCE STATUS (a), REGIONS OF NSW AND ACT—continued

	Month	Employed (<i>'000</i>)	Unemployed (<i>'000</i>)	Labour force (<i>'000</i>)	Unemp- loyment rate (per cent)	Partici- pation rate (per cent)
ST GEORGE—SUTHERLAND (SR)						
MALES	1999— November	123.6	4.4	128.1	3.5	73.5
	2000— September	124.6	1.7	126.4	1.4	74.1
	October	118.1	5.6	123.7	4.5	74.4
	November	121.4	4.6	126.0	3.6	74.7
FEMALES	1999— November	89.3	1.8	91.0	1.9	54.9
	2000— September	99.0	2.4	101.3	2.3	55.8
	October	100.4	2.7	103.1	2.6	55.5
	November	102.7	3.5	106.2	3.3	56.6
PERSONS	1999— November	212.9	6.2	219.1	2.8	64.4
	2000— September	223.6	4.1	227.7	1.8	64.7
	October	218.6	8.2	226.8	3.6	64.4
	November	224.0	8.1	232.1	3.5	65.1
CANTERBURY—BANKSTOWN (SR)						
MALES	1999— November	85.2	3.8	89.0	4.3	71.9
	2000— September	82.5	3.8	86.4	4.4	68.7
	October	76.9	5.8	82.7	7.0	68.1
	November	74.4	5.2	79.6	6.5	65.1
FEMALES	1999— November	61.0	4.0	65.0	6.1	52.1
	2000— September	58.2	4.4	62.6	7.1	47.7
	October	51.5	4.0	55.5	7.2	45.8
	November	50.8	4.4	55.2	8.0	44.8
PERSONS	1999— November	146.2	7.8	154.0	5.1	62.0
	2000— September	140.7	8.2	148.9	5.5	58.0
	October	128.4	9.7	138.2	7.0	57.0
	November	125.2	9.6	134.8	7.1	54.9
FAIRFIELD—LIVERPOOL AND OUTER SOUTH WESTERN SYDNEY (SRs)						
MALES	1999— November	147.3	11.2	158.4	7.1	71.6
	2000— September	157.8	15.0	172.8	8.7	77.3
	October	156.3	13.8	170.1	8.1	75.7
	November	156.2	11.3	167.5	6.7	75.7
FEMALES	1999— November	103.4	7.5	110.8	6.7	47.3
	2000— September	117.2	12.9	130.1	9.9	57.4
	October	111.5	10.6	122.1	8.7	53.7
	November	115.6	9.7	125.3	7.7	54.3
PERSONS	1999— November	250.6	18.6	269.2	6.9	59.1
	2000— September	275.0	27.9	302.9	9.2	67.3
	October	267.8	24.3	292.1	8.3	64.6
	November	271.8	21.0	292.8	7.2	64.8

TABLE 19. LABOUR FORCE STATUS (a), REGIONS OF NSW AND ACT—continued

	<i>Month</i>	<i>Employed</i> (<i>'000</i>)	<i>Unemployed</i> (<i>'000</i>)	<i>Labour</i> <i>force</i> (<i>'000</i>)	<i>Unemp-</i> <i>loyment</i> <i>rate</i> (<i>per cent</i>)	<i>Partici-</i> <i>pation</i> <i>rate</i> (<i>per cent</i>)
FAIRFIELD—LIVERPOOL (SR)						
MALES	1999— November	77.5	6.4	83.9	7.6	65.9
	2000— September	91.1	10.2	101.3	10.0	77.0
	October	85.9	9.3	95.2	9.8	73.8
	November	86.7	7.3	94.1	7.8	73.9
FEMALES	1999— November	53.7	* 3.8	57.6	* 6.7	41.4
	2000— September	60.5	8.8	69.3	12.8	52.9
	October	56.5	7.3	63.9	11.5	48.7
	November	58.9	6.4	65.3	9.8	48.6
PERSONS	1999— November	131.2	10.3	141.4	7.2	53.1
	2000— September	151.6	19.0	170.6	11.2	65.0
	October	142.4	16.7	159.0	10.5	61.2
	November	145.6	13.7	159.4	8.6	60.9
CENTRAL WESTERN SYDNEY (SR)						
MALES	1999— November	75.1	3.6	78.7	4.6	68.9
	2000— September	77.1	4.9	81.9	5.9	68.8
	October	76.6	3.8	80.3	4.7	66.1
	November	76.3	4.3	80.6	5.4	66.8
FEMALES	1999— November	52.5	* 1.1	53.6	* 2.0	47.6
	2000— September	48.7	* 2.0	50.7	* 4.0	44.3
	October	44.3	* 1.8	46.2	* 4.0	40.0
	November	48.7	* 1.7	50.4	* 3.3	44.1
PERSONS	1999— November	127.5	4.7	132.3	3.6	58.3
	2000— September	125.7	6.9	132.6	5.2	56.8
	October	120.9	5.6	126.5	4.4	53.4
	November	125.0	6.0	131.0	4.6	55.7
OUTER WESTERN SYDNEY (SR) AND BLACKTOWN (C) (b)						
MALES	1999— November	155.8	7.9	163.7	4.8	75.6
	2000— September	157.6	8.9	166.5	5.4	76.9
	October	158.6	5.4	164.0	3.3	77.4
	November	159.8	7.8	167.6	4.7	75.9
FEMALES	1999— November	122.5	7.3	129.9	5.7	57.0
	2000— September	129.1	7.1	136.2	5.2	60.6
	October	126.3	5.3	131.6	4.0	59.0
	November	124.8	6.5	131.3	5.0	59.8
PERSONS	1999— November	278.4	15.2	293.6	5.2	66.0
	2000— September	286.6	16.0	302.7	5.3	68.6
	October	284.9	10.7	295.6	3.6	67.9
	November	284.6	14.3	298.9	4.8	67.9

TABLE 19. LABOUR FORCE STATUS (a), REGIONS OF NSW AND ACT—continued

	Month	Employed ('000)	Unemployed ('000)	Labour force ('000)	Unemp- loyment rate (per cent)	Partici- pation rate (per cent)
LOWER NORTHERN SYDNEY (SR)						
MALES	1999— November	75.4	* 1.8	77.2	* 2.3	76.7
	2000— September	80.8	* 1.8	82.6	* 2.2	80.0
	October	78.9	* 2.0	80.9	* 2.5	77.9
	November	80.0	* 1.3	81.3	* 1.6	74.5
FEMALES	1999— November	65.1	* 0.3	65.4	* 0.5	55.6
	2000— September	68.2	* 0.7	68.8	* 1.0	60.5
	October	69.8	* 1.0	70.8	* 1.4	61.0
	November	71.5	* 1.3	72.8	* 1.8	63.7
PERSONS	1999— November	140.5	* 2.2	142.6	* 1.5	65.4
	2000— September	149.0	* 2.5	151.4	* 1.6	69.8
	October	148.7	* 3.0	151.7	* 2.0	69.0
	November	151.5	* 2.6	154.2	* 1.7	69.0
HORNSBY—KU-RING-GAI (SR) AND BAULKHAM HILLS (A) (b)						
MALES	1999— November	115.8	* 2.2	118.0	* 1.9	75.1
	2000— September	121.5	* 2.3	123.8	* 1.9	76.1
	October	118.3	* 1.7	120.0	* 1.4	75.1
	November	114.8	* 2.7	117.5	* 2.3	75.1
FEMALES	1999— November	96.6	* 1.6	98.2	* 1.6	57.6
	2000— September	94.6	* 1.5	96.1	* 1.5	55.2
	October	81.1	3.0	84.2	3.6	52.1
	November	83.4	* 1.6	85.0	* 1.9	52.3
PERSONS	1999— November	212.4	3.8	216.2	1.8	66.0
	2000— September	216.1	3.8	219.9	1.7	65.3
	October	199.5	4.7	204.2	2.3	63.5
	November	198.2	4.3	202.5	2.1	63.5
NORTHERN BEACHES (SR)						
MALES	1999— November	64.7	* 0.6	65.3	* 1.0	77.1
	2000— September	72.0	* 1.0	73.0	* 1.4	76.7
	October	71.5	* 0.7	72.2	* 1.0	75.1
	November	69.2	* 2.8	72.0	* 3.8	75.9
FEMALES	1999— November	52.9	* 1.0	53.9	* 1.8	56.7
	2000— September	59.2	* 0.7	59.9	* 1.1	62.1
	October	61.0	* 0.3	61.4	* 0.5	63.0
	November	56.2	* 1.7	57.9	* 2.9	58.4
PERSONS	1999— November	117.6	* 1.6	119.2	* 1.3	66.3
	2000— September	131.3	* 1.7	132.9	* 1.3	69.4
	October	132.6	* 1.0	133.6	* 0.8	69.0
	November	125.4	4.4	129.9	3.4	67.0

TABLE 19. LABOUR FORCE STATUS (a), REGIONS OF NSW AND ACT—continued

	<i>Month</i>	<i>Employed</i> ('000)	<i>Unemployed</i> ('000)	<i>Labour force</i> ('000)	<i>Unemployment rate</i> (per cent)	<i>Participation rate</i> (per cent)
GOSFORD—WYONG (SR)						
MALES	1999— November	61.5	3.2	64.6	4.9	63.6
	2000— September	63.7	5.9	69.6	8.5	67.4
	October	62.1	6.3	68.4	9.2	66.3
	November	59.9	7.5	67.5	11.2	65.0
FEMALES	1999— November	43.7	2.6	46.3	5.6	40.8
	2000— September	58.3	2.4	60.6	3.9	52.0
	October	56.3	3.1	59.4	5.2	50.4
	November	54.4	4.2	58.6	7.2	50.4
PERSONS	1999— November	105.2	5.8	110.9	5.2	51.6
	2000— September	121.9	8.3	130.2	6.4	59.2
	October	118.4	9.4	127.8	7.4	57.8
	November	114.3	11.8	126.1	9.3	57.3
HUNTER (SR)						
MALES	1999— November	133.7	12.9	146.5	8.8	67.3
	2000— September	144.6	13.9	158.5	8.8	66.9
	October	152.2	11.9	164.1	7.2	67.9
	November	151.4	12.4	163.8	7.6	67.0
FEMALES	1999— November	100.1	9.7	109.8	8.8	48.3
	2000— September	111.8	10.1	121.9	8.3	47.8
	October	114.9	10.1	125.0	8.1	47.6
	November	110.6	9.2	119.7	7.7	45.9
PERSONS	1999— November	233.8	22.6	256.3	8.8	57.6
	2000— September	256.4	24.1	280.5	8.6	57.0
	October	267.1	22.0	289.1	7.6	57.3
	November	261.9	21.6	283.5	7.6	56.1
NEWCASTLE (SRS)						
MALES	1999— November	112.1	12.1	124.2	9.8	67.0
	2000— September	126.5	12.6	139.1	9.0	67.5
	October	131.8	10.8	142.6	7.6	68.2
	November	127.8	12.4	140.3	8.9	66.3
FEMALES	1999— November	86.3	8.6	94.9	9.1	49.4
	2000— September	99.2	9.5	108.7	8.7	48.3
	October	100.9	10.1	111.0	9.1	48.2
	November	95.2	7.9	103.1	7.7	45.5
PERSONS	1999— November	198.4	20.7	219.1	9.5	58.1
	2000— September	225.7	22.1	247.8	8.9	57.5
	October	232.6	21.0	253.6	8.3	57.7
	November	223.1	20.3	243.4	8.4	55.6

TABLE 19. LABOUR FORCE STATUS (a), REGIONS OF NSW AND ACT—continued

<i>Month</i>	<i>Employed</i> (<i>'000</i>)	<i>Unemployed</i> (<i>'000</i>)	<i>Labour</i> <i>force</i> (<i>'000</i>)	<i>Unemp-</i> <i>loyment</i> <i>rate</i> (<i>per cent</i>)	<i>Partici-</i> <i>pation</i> <i>rate</i> (<i>per cent</i>)	
ILLAWARRA AND SOUTH EASTERN (SRs) (c)						
MALES	1999— November	145.3	14.0	159.3	8.8	68.3
	2000— September	146.2	9.8	156.0	6.3	69.0
	October	141.1	11.0	152.1	7.2	67.3
	November	140.5	13.0	153.5	8.4	68.2
FEMALES	1999— November	103.0	7.2	110.2	6.5	48.2
	2000— September	109.3	11.3	120.6	9.3	49.2
	October	111.1	6.7	117.8	5.7	50.3
	November	112.8	6.4	119.2	5.4	50.9
PERSONS	1999— November	248.3	21.2	269.5	7.9	58.3
	2000— September	255.5	21.1	276.6	7.6	58.7
	October	252.2	17.6	269.8	6.5	58.7
	November	253.3	19.4	272.6	7.1	59.4
ILLAWARRA (SR)						
MALES	1999— November	98.4	9.4	107.8	8.7	66.1
	2000— September	101.0	7.0	108.1	6.5	68.2
	October	99.6	6.7	106.3	6.3	66.1
	November	99.9	10.7	110.6	9.7	68.0
FEMALES	1999— November	73.2	* 2.1	75.3	* 2.8	46.6
	2000— September	76.3	8.0	84.3	9.5	49.5
	October	78.4	4.5	82.9	5.4	49.7
	November	79.6	4.1	83.8	4.9	50.0
PERSONS	1999— November	171.6	11.5	183.1	6.3	56.4
	2000— September	177.3	15.1	192.4	7.8	58.5
	October	178.0	11.2	189.2	5.9	57.8
	November	179.6	14.8	194.4	7.6	58.9
WOLLONGONG (SRS)						
MALES	1999— November	73.5	6.4	79.9	8.0	69.0
	2000— September	74.7	6.3	81.0	7.8	69.0
	October	76.5	5.3	81.8	6.5	67.0
	November	75.6	10.0	85.6	11.7	70.3
FEMALES	1999— November	53.1	* 1.1	54.1	* 2.0	49.7
	2000— September	53.9	7.4	61.3	12.1	49.9
	October	58.1	3.5	61.6	5.7	50.2
	November	57.7	3.8	61.5	6.3	50.2
PERSONS	1999— November	126.6	7.5	134.0	5.6	59.6
	2000— September	128.6	13.7	142.3	9.6	59.2
	October	134.6	8.8	143.4	6.2	58.6
	November	133.3	13.8	147.1	9.4	60.2

TABLE 19. LABOUR FORCE STATUS (a), REGIONS OF NSW AND ACT—continued

	<i>Month</i>	<i>Employed</i> (<i>'000</i>)	<i>Unemployed</i> (<i>'000</i>)	<i>Labour</i> <i>force</i> (<i>'000</i>)	<i>Unemp-</i> <i>loyment</i> <i>rate</i> (<i>per cent</i>)	<i>Partici-</i> <i>pation</i> <i>rate</i> (<i>per cent</i>)
RICHMOND—TWEED AND MID-NORTH COAST (SRs)						
MALES	1999— November	98.7	13.5	112.2	12.0	58.9
	2000— September	97.3	15.3	112.6	13.6	63.2
	October	90.0	14.0	104.0	13.4	59.2
	November	91.9	14.4	106.3	13.6	60.3
FEMALES	1999— November	82.9	11.1	93.9	11.8	46.6
	2000— September	77.2	5.6	82.8	6.8	47.3
	October	73.2	7.8	81.0	9.7	46.9
	November	76.5	9.6	86.1	11.2	48.0
PERSONS	1999— November	181.6	24.6	206.1	11.9	52.6
	2000— September	174.5	20.9	195.4	10.7	55.3
	October	163.2	21.8	185.0	11.8	53.1
	November	168.4	24.0	192.4	12.5	54.1
NORTHERN, FAR WEST—NORTH WESTERN AND CENTRAL WEST (SRs) (d)						
MALES	1999— November	122.0	6.2	128.2	4.9	73.1
	2000— September	127.1	6.5	133.7	4.9	72.7
	October	124.3	6.7	131.0	5.1	71.3
	November	116.9	6.0	122.9	4.9	68.2
FEMALES	1999— November	92.7	* 4.6	97.3	* 4.7	54.4
	2000— September	85.8	* 5.0	90.8	* 5.5	52.9
	October	87.0	* 3.2	90.1	* 3.5	50.5
	November	81.8	* 4.0	85.8	* 4.7	49.0
PERSONS	1999— November	214.7	10.8	225.4	4.8	63.7
	2000— September	212.9	11.6	224.4	5.1	63.1
	October	211.2	9.9	221.1	4.5	61.1
	November	198.6	10.0	208.6	4.8	58.8
MURRAY—MURRUMBIDGEE (SR)						
MALES	1999— November	73.5	* 2.4	75.9	* 3.2	74.8
	2000— September	74.6	7.3	81.9	9.0	79.0
	October	74.6	* 4.5	79.1	* 5.7	77.4
	November	75.7	* 4.1	79.8	* 5.2	76.4
FEMALES	1999— November	46.7	* 5.2	51.9	* 10.0	49.8
	2000— September	59.4	* 2.9	62.3	* 4.7	60.3
	October	59.0	* 2.5	61.5	* 4.0	59.7
	November	54.9	* 2.3	57.3	* 4.0	56.1
PERSONS	1999— November	120.2	7.6	127.9	6.0	62.1
	2000— September	134.0	10.2	144.2	7.1	69.7
	October	133.6	7.0	140.6	5.0	68.5
	November	130.6	6.5	137.1	4.7	66.4

TABLE 19. LABOUR FORCE STATUS (a), REGIONS OF NSW AND ACT—continued

	<i>Month</i>	<i>Employed</i> (<i>'000</i>)	<i>Unemployed</i> (<i>'000</i>)	<i>Labour</i> <i>force</i> (<i>'000</i>)	<i>Unemp-</i> <i>loyment</i> <i>rate</i> (<i>per cent</i>)	<i>Partici-</i> <i>pation</i> <i>rate</i> (<i>per cent</i>)
AUSTRALIAN CAPITAL TERRITORY AND SOUTH EASTERN (SRs) (c)						
MALES	1999— November	132.9	9.8	142.7	6.9	76.9
	2000— September	135.5	7.5	143.0	5.2	76.7
	October	131.1	9.0	140.1	6.5	76.0
	November	129.4	7.7	137.1	5.6	75.6
FEMALES	1999— November	107.1	9.6	116.7	8.3	61.6
	2000— September	114.6	6.9	121.5	5.6	61.0
	October	114.0	4.9	118.8	4.1	62.0
	November	115.4	4.9	120.4	4.1	63.1
PERSONS	1999— November	239.9	19.5	259.4	7.5	69.2
	2000— September	250.2	14.4	264.5	5.4	68.6
	October	245.0	13.9	259.0	5.4	68.9
	November	244.9	12.6	257.5	4.9	69.2

(a) While the Labour Force Survey is designed primarily to produce reliable estimates at the national and State/Territory level, it also delivers estimates for a number of regions within States. As with national and State estimates, regional labour force estimates are subject to sampling error. Since estimates for regions are components of corresponding estimates at the State level — and are thus based on a considerably smaller sample size — they are subject to higher relative standard error. Care should therefore be taken in interpretation of regional estimates, particularly month to month movements. Tables of standard errors are included in the Technical Note on pages 59-64 of this publication. Regional estimates from September 1997 onward may not be directly comparable with those before September 1997 because a new sample has been selected which may have different characteristics to the old. (b) New region from September 1997. (c) Estimates for the South Eastern (SR) are not published separately. Data for the South Eastern (SR) are included in ACT and South Eastern (SRs) and in Illawarra and South Eastern (SRs). (d) From September 1997 includes Far West Statistical Division, previously excluded. Break in the series from September 1997.

TABLE 20. LABOUR FORCE STATUS: ORIGINAL SERIES, ACT

Month	Employed		Unemployed			Labour force ('000)	Not in labour force ('000)	Civilian population aged 15 and over ('000)	Unemployment rate (per cent)	Participation rate (per cent)	
	Full-time workers ('000)	Part-time workers ('000)	Total ('000)	Looking for full-time work ('000)	Looking for part-time work ('000)						
MALES											
November—											
1996	69.6	9.7	79.3	4.8	1.3	6.1	85.5	26.1	111.6	7.2	76.6
1997	69.2	11.5	80.7	4.9	1.9	6.7	87.4	24.5	112.0	7.7	78.1
1998	67.7	12.6	80.3	5.0	1.5	6.4	86.8	26.9	113.7	7.4	76.3
1999—											
September	69.6	15.5	85.1	4.1	1.7	5.7	90.9	24.4	115.3	6.3	78.8
October	72.8	14.7	87.5	3.3	1.4	4.7	92.2	23.2	115.4	5.1	79.9
November	71.1	14.9	86.0	4.2	* 1.0	5.2	91.2	24.3	115.5	5.7	78.9
2000—											
August	75.7	13.8	89.5	3.5	* 0.7	4.2	93.7	25.2	118.9	4.5	78.8
September	77.1	13.3	90.4	3.1	1.6	4.7	95.1	23.9	119.0	4.9	79.9
October	74.9	14.6	89.5	3.5	1.3	4.8	94.3	24.7	119.0	5.1	79.3
November	74.7	14.2	88.9	3.9	1.5	5.4	94.3	24.7	118.9	5.7	79.3
MARRIED FEMALES											
November—											
1996	25.4	15.8	41.2	1.8	* 0.9	2.7	43.9	22.3	66.2	6.1	66.3
1997	27.5	14.4	41.9	1.4	* 0.4	1.8	43.7	22.0	65.8	4.1	66.5
1998	25.8	15.5	41.3	* 0.7	* 0.7	1.4	42.7	24.1	66.8	3.2	63.9
1999—											
September	28.7	17.7	46.4	1.2	* 0.8	2.0	48.4	20.0	68.3	4.1	70.8
October	27.5	17.4	44.9	1.5	* 0.8	2.3	47.3	21.5	68.7	5.0	68.8
November	28.7	16.0	44.6	1.2	* 0.7	2.0	46.6	20.4	67.0	4.2	69.6
2000—											
August	29.5	18.9	48.4	* 0.6	* 0.3	* 0.9	49.4	19.5	68.9	* 1.9	71.6
September	29.6	18.3	47.9	* 0.6	* 0.7	1.3	49.2	20.0	69.3	2.6	71.1
October	29.3	19.4	48.7	* 0.5	* 0.6	* 1.0	49.7	19.4	69.1	* 2.1	71.9
November	30.3	19.2	49.5	* 0.2	* 0.2	* 0.4	49.9	20.8	70.6	* 0.7	70.6
ALL FEMALES											
November—											
1996	42.8	27.8	70.5	4.2	2.3	6.5	77.0	43.8	120.8	8.4	63.8
1997	48.1	24.3	72.4	4.0	1.7	5.6	78.1	42.8	120.8	7.2	64.6
1998	46.5	28.0	74.5	1.9	1.5	3.4	77.9	43.4	121.4	4.4	64.2
1999—											
September	50.8	29.4	80.2	2.0	1.8	3.8	84.0	38.3	122.3	4.5	68.7
October	50.1	28.0	78.2	2.5	2.1	4.6	82.7	39.7	122.4	5.5	67.6
November	50.2	27.1	77.3	2.4	2.2	4.6	81.8	40.7	122.6	5.6	66.8
2000—											
August	51.3	31.1	82.3	1.6	1.3	2.9	85.3	38.9	124.2	3.4	68.7
September	51.0	30.5	81.6	2.1	1.6	3.6	85.2	39.2	124.3	4.3	68.5
October	49.8	31.5	81.3	1.8	* 0.9	2.7	84.0	40.4	124.3	3.2	67.5
November	50.8	31.5	82.3	1.4	1.3	2.7	85.0	39.3	124.3	3.1	68.4
PERSONS											
November—											
1996	112.4	37.5	149.9	9.0	3.6	12.6	162.5	69.9	232.4	7.8	69.9
1997	117.3	35.8	153.1	8.8	3.6	12.4	165.5	67.3	232.8	7.5	71.1
1998	114.2	40.6	154.8	6.9	3.0	9.9	164.7	70.3	235.1	6.0	70.1
1999—											
September	120.4	44.9	165.3	6.1	3.4	9.5	174.9	62.8	237.6	5.5	73.6
October	122.9	42.8	165.7	5.8	3.5	9.3	175.0	62.9	237.8	5.3	73.6
November	121.3	42.0	163.3	6.6	3.2	9.8	173.0	65.1	238.1	5.6	72.7
2000—											
August	127.0	44.8	171.8	5.1	2.0	7.1	178.9	64.1	243.1	4.0	73.6
September	128.2	43.8	172.0	5.1	3.2	8.3	180.3	63.0	243.4	4.6	74.1
October	124.7	46.1	170.8	5.2	2.2	7.5	178.3	65.0	243.3	4.2	73.3
November	125.5	45.7	171.2	5.3	2.7	8.1	179.3	64.0	243.3	4.5	73.7

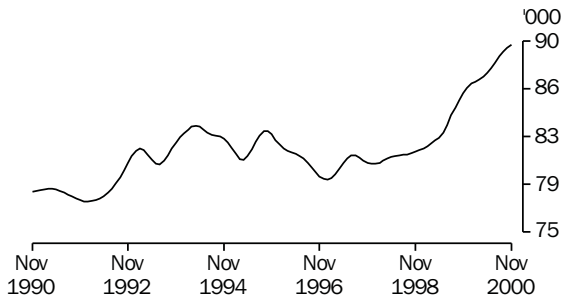
TABLE 21. LABOUR FORCE STATUS: TREND SERIES (a), ACT

Month	Employed (<i>'000</i>)	Unemployed (<i>'000</i>)	Labour force (<i>'000</i>)	Unemployment rate (per cent)	Participation rate (per cent)
MALES					
<i>November—</i>					
1996	79.4	7.5	87.0	8.7	77.9
1997	80.5	7.4	87.8	8.4	78.4
1998	81.3	6.3	87.6	7.2	77.1
<i>1999—</i>					
September	84.9	5.7	90.6	6.3	78.6
October	85.4	5.6	91.1	6.2	78.9
November	86.0	5.5	91.5	6.0	79.2
December	86.4	5.4	91.8	5.9	79.2
<i>2000—</i>					
January	86.7	5.3	92.0	5.8	79.2
February	86.8	5.3	92.2	5.8	79.1
March	87.0	5.4	92.3	5.8	78.9
April	87.2	5.4	92.5	5.8	78.7
May	87.5	5.2	92.8	5.7	78.6
June	87.9	5.1	93.0	5.5	78.5
July	88.3	5.0	93.3	5.3	78.6
August	88.8	4.9	93.7	5.2	78.8
September	89.2	4.9	94.1	5.2	79.1
October	89.5	5.0	94.5	5.3	79.4
November	89.7	5.1	94.8	5.4	79.6
FEMALES					
<i>November—</i>					
1996	71.3	6.2	77.5	8.0	64.2
1997	71.9	6.1	78.0	7.8	64.6
1998	74.1	4.1	78.3	5.3	64.5
<i>1999—</i>					
September	77.9	4.1	82.0	5.0	67.0
October	78.3	4.2	82.5	5.1	67.4
November	78.6	4.2	82.8	5.1	67.6
December	78.6	4.2	82.8	5.1	67.5
<i>2000—</i>					
January	78.6	4.1	82.7	5.0	67.3
February	78.5	4.1	82.6	4.9	67.1
March	78.4	4.1	82.5	4.9	66.9
April	78.5	4.1	82.5	4.9	66.9
May	78.8	4.0	82.8	4.9	66.9
June	79.3	3.8	83.1	4.6	67.1
July	80.0	3.6	83.6	4.3	67.4
August	80.7	3.4	84.1	4.0	67.7
September	81.3	3.2	84.4	3.7	67.9
October	81.7	3.0	84.7	3.5	68.1
November	82.1	2.9	84.9	3.4	68.3
PERSONS					
<i>November—</i>					
1996	150.7	13.8	164.5	8.4	70.8
1997	152.4	13.4	165.8	8.1	71.2
1998	155.5	10.4	165.9	6.3	70.6
<i>1999—</i>					
September	162.8	9.8	172.5	5.7	72.6
October	163.7	9.8	173.6	5.7	73.0
November	164.5	9.7	174.3	5.6	73.2
December	165.0	9.6	174.6	5.5	73.2
<i>2000—</i>					
January	165.3	9.4	174.7	5.4	73.1
February	165.3	9.4	174.7	5.4	72.9
March	165.4	9.4	174.8	5.4	72.7
April	165.7	9.4	175.1	5.4	72.6
May	166.3	9.3	175.5	5.3	72.6
June	167.2	9.0	176.1	5.1	72.7
July	168.3	8.6	176.9	4.9	72.9
August	169.5	8.3	177.8	4.7	73.2
September	170.4	8.1	178.5	4.5	73.4
October	171.1	8.0	179.1	4.5	73.6
November	171.7	8.0	179.7	4.4	73.8

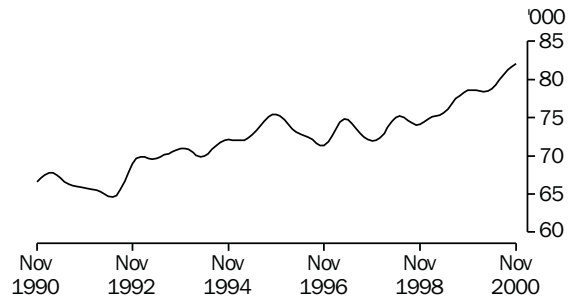
(a) See Explanatory Notes 29 and 30.

TREND SERIES, ACT(a)

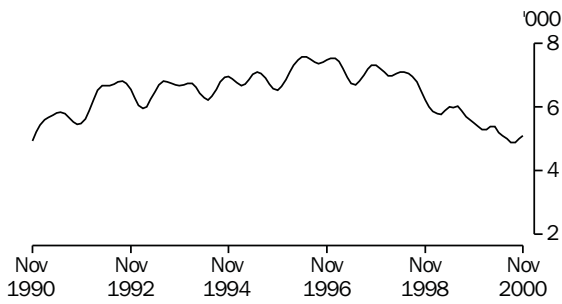
EMPLOYED MALES



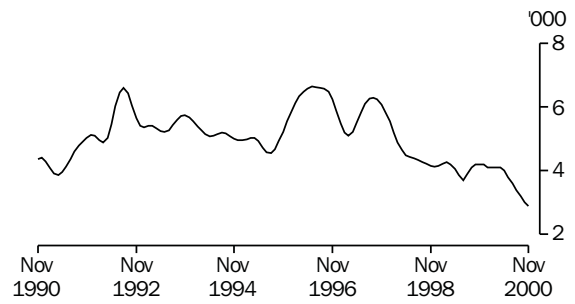
EMPLOYED FEMALES



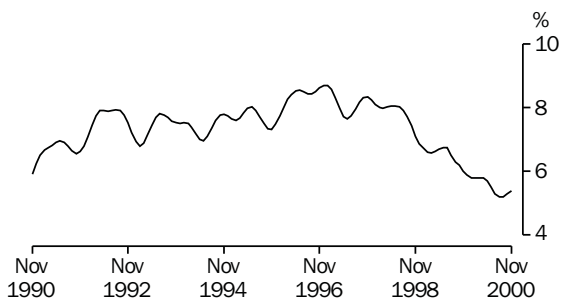
UNEMPLOYED MALES



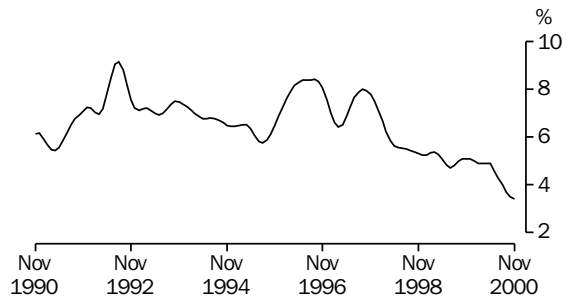
UNEMPLOYED FEMALES



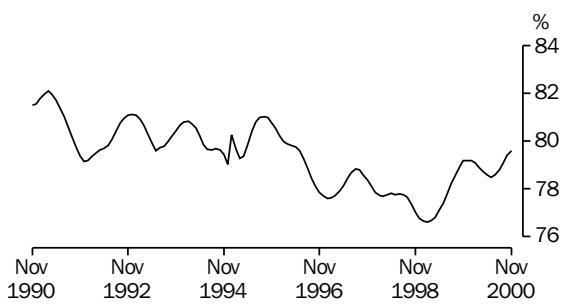
MALE UNEMPLOYMENT RATE



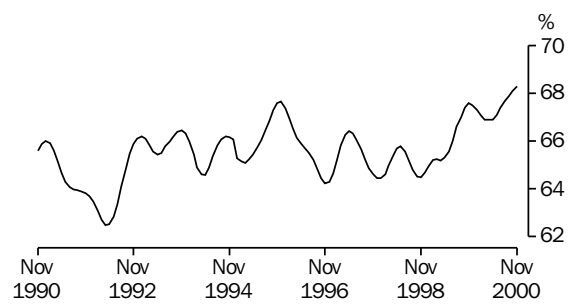
FEMALE UNEMPLOYMENT RATE



MALE PARTICIPATION RATE



FEMALE PARTICIPATION RATE



(a) Comparisons between these graphs should not be made, as their vertical axes are not similarly scaled.

TABLE 22. LABOUR FORCE STATUS: AGE, ACT, NOVEMBER 2000

	Persons						
	Females			Age group (years)			Total
	Males	Married	Total	15-19	20-24	25 and over	
	— '000 —						
<i>Employed</i>	88.9	49.5	82.3	13.1	20.3	137.8	171.2
Full-time workers	74.7	30.3	50.8	2.7	12.4	110.4	125.5
Part-time workers	14.2	19.2	31.5	10.3	8.0	27.4	45.7
<i>Unemployed</i>	5.4	* 0.4	2.7	2.5	1.2	4.4	8.1
Looking for full-time work	3.9	* 0.2	1.4	* 0.9	* 0.9	3.5	5.3
Looking for part-time work	1.5	* 0.2	1.3	1.6	* 0.2	* 1.0	2.7
<i>Labour force</i>	94.3	49.9	85.0	15.5	21.5	142.2	179.3
Not in labour force	24.7	20.8	39.3	8.4	5.1	50.4	64.0
Aged 15-19 attending school	4.1	* 0.0	2.7	6.8	6.8
<i>Civilian population</i>	118.9	70.6	124.3	24.0	26.6	192.7	243.3
	— per cent —						
Unemployment rate	5.7	* 0.7	3.1	16.0	5.4	3.1	4.5
Looking for full-time work	5.0	* 0.6	2.7	* 25.4	* 7.0	3.1	4.1
Participation rate	79.3	70.6	68.4	64.9	80.7	73.8	73.7
Employment/population ratio	74.7	70.1	66.2	54.5	76.4	71.5	70.4
	— number —						
Average weekly hours worked							
by employed persons	38.6	29.1	28.9	17.1	30.9	36.0	34.0
Average duration of unemployment (weeks)	64.1	* 32.3	43.0	20.4	* 46.1	80.6	57.1

TABLE 23. NON-INSTITUTIONALISED PERSONS(a): LABOUR FORCE STATUS, BIRTHPLACE AND YEAR OF ARRIVAL, ACT, NOVEMBER 2000
 ('000)

	Employed	Unemployed	Not in labour force	Labour force	Civilian population aged 15 and over
<i>Born in Australia</i>	133.5	5.9	41.6	139.4	181.1
<i>Born outside Australia</i>	37.7	2.2	21.4	39.8	61.2
Arrived before 1966	10.4	* 0.4	10.0	10.8	20.8
Arrived 1966-1970	4.5	* 0.2	2.7	4.6	7.3
Arrived 1971-1975	4.7	* 0.1	* 1.0	4.8	5.8
Arrived 1976-1980	3.4	* 0.1	* 0.7	3.5	4.2
Arrived 1981-1985	4.0	* 0.3	1.2	4.4	5.6
Arrived 1986-1990	4.0	* 0.3	1.3	4.3	5.7
Arrived 1991-1995	2.8	* 0.3	1.5	3.1	4.6
Arrived 1991 to survey date	6.3	* 0.5	4.2	6.8	11.0
<i>Main English speaking countries</i>	15.0	* 0.5	5.5	15.5	21.0
Arrived before 1966	4.8	* 0.1	2.4	4.9	7.3
Arrived 1966-1970	2.4	* 0.1	1.3	2.5	3.8
Arrived 1971-1975	2.1	* 0.0	* 0.2	2.1	2.3
Arrived 1976-1980	2.0	* 0.1	* 0.4	2.1	2.5
Arrived 1981-1985	* 0.9	* 0.0	* 0.1	* 0.9	* 1.0
Arrived 1986-1990	* 0.8	* 0.2	* 0.3	* 1.0	1.3
Arrived 1991-1995	* 0.7	* 0.0	* 0.6	* 0.7	1.4
Arrived 1991 to survey date	2.1	* 0.0	* 0.8	2.1	2.9
<i>Other than Main English speaking countries</i>	22.6	1.7	15.9	24.3	40.2
Arrived before 1966	5.7	* 0.3	7.6	5.9	13.5
Arrived 1966-1970	2.1	* 0.1	1.4	2.2	3.5
Arrived 1971-1975	2.6	* 0.1	* 0.8	2.7	3.5
Arrived 1976-1980	1.4	* 0.0	* 0.3	1.4	1.8
Arrived 1981-1985	3.1	* 0.3	1.1	3.5	4.6
Arrived 1986-1990	3.2	* 0.1	1.1	3.3	4.4
Arrived 1991-1995	2.1	* 0.3	* 0.9	2.4	3.3
Arrived 1991 to survey date	4.2	* 0.5	3.3	4.7	8.0
Total	171.2	8.1	63.0	179.3	242.3

(a) Excludes boarding school pupils.

**TABLE 24. EMPLOYED PERSONS: INDUSTRY, ACT
(’000)**

Industry division	Average for year ending					
	November 1999			November 2000		
	Males	Females	Persons	Males	Females	Persons
Industry—						
Agriculture, forestry and fishing	* 0.7	* 0.4	1.1	* 0.6	* 0.3	* 0.8
Mining	* 0.1	* 0.0	* 0.1	* 0.0	* 0.0	* 0.0
Manufacturing	2.6	1.1	3.7	4.0	1.9	5.9
Electricity, gas and water supply	* 0.7	* 0.3	* 0.9	* 0.6	* 0.2	* 0.8
Construction	6.3	* 0.9	7.2	9.4	1.3	10.6
Wholesale trade	3.1	1.3	4.4	2.8	1.2	4.0
Retail trade	12.2	11.0	23.1	11.5	10.2	21.7
Accommodation, cafes and restaurants	3.6	4.3	7.9	4.1	3.7	7.8
Transport and storage	3.4	* 0.9	4.3	3.3	1.7	5.0
Communication services	1.5	* 1.0	2.5	1.4	1.2	2.6
Finance and insurance	1.4	2.1	3.5	2.0	2.3	4.3
Property and business services	12.7	9.1	21.8	14.6	9.5	24.2
Government administration and defence	20.8	18.8	39.7	18.4	18.2	36.6
Education	5.7	9.0	14.7	5.1	10.5	15.6
Health and community services	2.2	10.0	12.2	3.6	12.3	15.9
Cultural and recreational services	3.3	2.9	6.3	3.5	3.0	6.5
Personal and other services	3.3	3.4	6.8	3.3	3.1	6.4
Total employed	83.6	76.5	160.0	88.0	80.7	168.8

AVERAGE EMPLOYMENT BY INDUSTRY DIVISION, ACT, YEAR ENDING NOVEMBER

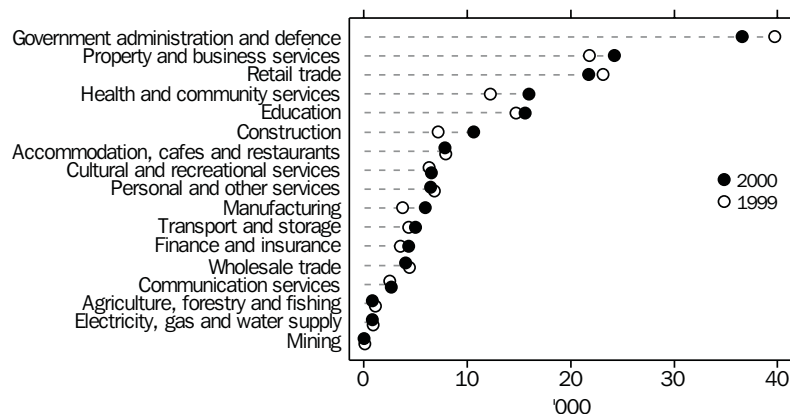


TABLE 25. EMPLOYED PERSONS: OCCUPATION, ACT
(**'000**)

Major occupation group	Average for year ending					
	November 1999			November 2000		
	Males	Females	Persons	Males	Females	Persons
Occupation—						
Managers and administrators	10.1	3.8	13.8	9.7	5.4	15.1
Professionals	21.0	19.5	40.5	24.2	20.8	45.0
Associate professionals	13.7	10.7	24.4	12.4	9.9	22.3
Tradespersons and related workers	12.0	1.5	13.4	15.0	1.3	16.3
Advanced clerical and service workers	* 0.4	5.1	5.5	* 0.5	6.1	6.6
Intermediate clerical, sales and service workers	9.1	21.7	30.8	10.3	24.2	34.6
Intermediate production and transport workers	5.0	* 0.6	5.6	5.2	1.1	6.3
Elementary clerical, sales and service workers	7.4	10.8	18.2	6.1	9.6	15.7
Labourers and related workers	4.9	2.8	7.6	4.7	2.4	7.1
Total employed	83.6	76.5	160.0	88.0	80.7	168.8

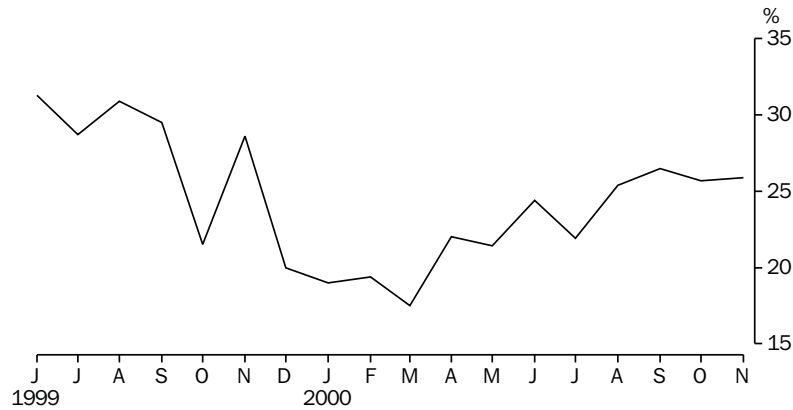
AVERAGE EMPLOYMENT BY OCCUPATION GROUP, ACT, YEAR ENDING NOVEMBER



TABLE 26. LONG-TERM UNEMPLOYMENT, ACT

Month	Long-term unemployment									Long-term unemployment as a proportion of total unemployment		
	52 weeks and under 104			104 weeks and over			Total			Males (per cent)	Females (per cent)	Persons (per cent)
	Males ('000)	Females ('000)	Persons ('000)	Males ('000)	Females ('000)	Persons ('000)	Males ('000)	Females ('000)	Persons ('000)			
1999—												
September	* 0.6	* 0.3	* 0.9	1.3	* 0.5	1.9	1.9	* 0.9	2.8	33.3	23.7	29.5
October	* 0.4	* 0.3	* 0.7	* 0.9	* 0.5	1.3	1.3	* 0.8	2.0	27.7	17.4	21.5
November	* 0.7	* 0.5	1.2	1.1	* 0.5	1.6	1.8	* 1.0	2.8	34.6	21.7	28.6
December	* 0.4	* 0.3	* 0.7	* 0.9	* 0.2	1.1	1.3	* 0.5	1.8	24.5	13.5	20.0
2000—												
January	* 0.2	* 0.4	* 0.6	* 1.0	* 0.4	1.4	1.2	* 0.8	2.0	18.2	20.5	19.0
February	* 0.2	* 0.5	* 0.7	* 1.0	* 0.3	1.3	1.2	* 0.7	2.0	22.2	14.0	19.4
March	* 0.3	* 0.4	* 0.7	* 1.0	* 0.2	1.2	1.2	* 0.6	1.8	21.1	13.0	17.5
April	* 0.3	* 0.3	* 0.6	1.1	* 0.3	1.4	1.4	* 0.6	2.0	26.4	15.8	22.0
May	* 0.6	* 0.2	* 0.8	* 0.9	* 0.4	1.3	1.5	* 0.6	2.1	29.4	12.5	21.4
June	* 1.0	* 0.2	1.2	* 0.8	* 0.2	* 1.0	1.8	* 0.4	2.2	32.7	11.4	24.4
July	* 0.5	* 0.2	* 0.6	* 0.6	* 0.3	* 0.9	1.1	* 0.5	1.6	24.4	17.9	21.9
August	* 0.7	* 0.4	* 1.0	* 0.7	* 0.1	* 0.8	1.4	* 0.5	1.8	33.3	17.2	25.4
September	* 0.7	* 0.2	* 0.9	* 0.9	* 0.4	1.3	1.7	* 0.6	2.2	36.2	16.7	26.5
October	* 0.7	* 0.1	* 0.8	* 0.9	* 0.2	1.1	1.6	* 0.3	1.9	33.3	11.1	25.7
November	* 0.4	* 0.1	* 0.5	1.2	* 0.4	1.6	1.6	* 0.5	2.1	29.6	18.5	25.9

LONG-TERM UNEMPLOYED AS A PROPORTION OF TOTAL UNEMPLOYED, ACT



DEFINITIONS

8 The labour force category to which a person is assigned depends on the actual activity undertaken during the reference week (i.e. whether working, looking for work, etc.). The following definitions, which conform closely to the international standard definitions specified by the International Labour Office (ILO), relate only to those persons within the scope of the survey.

9 *Employed persons* comprise civilians aged 15 years and over who, during the reference week:

- worked for one hour or more for pay, profit, commission or payment in kind (including employees, employers and own account workers) in a job or business, or on a farm; or
- worked for one hour or more without pay in a family business or on a farm (i.e. contributing family workers); or
- were employees who had a job but were not at work and were: on paid leave; on leave without pay for less than four weeks up to the end of the reference week; stood down without pay because of bad weather or plant breakdown at their place of employment for less than four weeks up to the end of the reference week; on strike or locked out; on workers' compensation and expected to be returning to their job; or receiving wages or salary while undertaking full-time study; or
- were employers, own account workers or contributing family workers who had a job, business or farm, but were not at work.

10 Prior to April 1986, contributing family workers who worked for 1–14 hours were excluded from the category of employed persons.

11 Employed persons can be classified into:

- *full-time workers*, i.e. those who usually worked 35 hours or more a week (in all jobs) and those who, although usually part-time workers, worked 35 hours or more during the reference week; and
- *part-time workers*, i.e. those who usually worked less than 35 hours a week and who did so during the reference week.

12 *Unemployed persons* are those aged 15 years and over who were not employed during the reference week, and:

- had actively looked for full-time or part-time work at any time in the four weeks up to the end of the reference week, and:
 - were available for work in the reference week, or would have been available except for temporary illness (i.e. lasting for less than four weeks to the end of the reference week); or
 - were waiting to start a new job within four weeks from the end of the reference week and would have started in the reference week if the job had been available then; or

- were waiting to be called back to a full-time or part-time job from which they had been stood down without pay for less than four weeks up to the end of the reference week (including the whole of the reference week) for reasons other than bad weather or plant breakdown.

13 *Actively looking for work* includes writing, telephoning or applying in person to an employer for work; answering an advertisement for a job; checking factory notice-boards or the touchscreens at the Centrelink offices; being registered with Centrelink as a jobseeker; checking or registering with any other employment agency; advertising or tendering for work; and contacting friends or relatives.

14 *The unemployment rate* for any group is the number of unemployed persons expressed as a percentage of the labour force in the same group.

15 *The labour force* comprises persons who were employed or unemployed as defined above.

16 *Long-term unemployed* comprises persons unemployed for a period of 52 weeks or more.

17 *Persons not in the labour force* are those who, during the reference week, were not in the categories employed or unemployed as defined above.

18 *The participation rate* for any group is the labour force expressed as a percentage of the civilian population aged 15 years and over in the same group.

19 *Duration of unemployment* is the period from the time the person began looking for work or was stood down to the end of the reference week.

20 *Unemployed persons classified by industry and occupation.* Unemployed persons who had worked full-time for two weeks or more in the last two years are classified according to the industry and occupation of their most recent full-time job.

21 *Industry classification.* From August 1994, LFS industry data have been classified according to the *Australian and New Zealand Standard Industrial Classification (ANZSIC), 1993* (Cat. no. 1292.0).

22 *Occupation classification.* From August 1996, occupation data have been classified according to the *Australian Standard Classification of Occupations (ASCO), Second Edition* (Cat. no. 1220.0).

23 *Marital status.* In the LFS, persons are classified as married or not married. Persons are classified as married if they are reported as being married (including de facto) and their spouse was a usual resident of the household at the time of the survey.

DEFINITIONS *continued*

24 *Persons attending school or a tertiary educational institution.*

Persons attending school comprise those aged 15–19 years who, during the reference week, were enrolled full-time at secondary or high schools. Persons attending a tertiary educational institution comprise those aged 15–24 years who were enrolled full-time at universities, other institutions of higher education, TAFE colleges and theological colleges.

25 *Employment/population ratio.* For any group, the number of employed persons expressed as a percentage of the civilian population aged 15 years and over in the same group.

STATISTICAL AREAS

26 The regional structure for NSW used in tables 16–19 is based on the Statistical Region structure of the *Australian Standard Geographical Classification (ASGC)* (Cat. no. 1216.0).

27 Changes were made to labour force regions in NSW from September 1997. Blacktown–Baulkham Hills SR was split up with Blacktown being merged with Outer Western Sydney SR to form Outer Western Sydney SR and Blacktown (C) and Baulkham Hills being merged with Hornsby–Ku-ring-gai SR to form Hornsby–Ku-ring-gai SR and Baulkham Hills (A). In addition, Northern, Far West–North Western and Central West SRs now include the Far West Statistical Division, previously excluded. This has resulted in a series break in the data for this area.

28 For further details, see *Information Paper: Regional Labour Force Statistics, September 1997* (Cat. no. 6262.0).

SEASONAL ADJUSTMENT
AND TREND ESTIMATION

29 Seasonal adjustment is a means of removing the estimated effects of normal seasonal variation from the series so that the effects of other influences on the series can be more clearly recognised.

30 Smoothing seasonally adjusted series produces a measure of the underlying trend by reducing the impact of the irregular component of the series. The trend estimates are derived by applying a 13-term Henderson-weighted moving average to the respective seasonally adjusted series. While this smoothing technique enables estimates to be produced which include the latest month, it does result in revisions to the most recent months as additional observations become available.

31 Seasonally adjusted series for NSW appear in table 2. Trend estimates for NSW and ACT appear in tables 2 and 21 respectively. Seasonally adjusted data is not available for the ACT.

RELIABILITY OF THE
ESTIMATES

32 Estimates are subject to sampling and non-sampling errors. See the Technical note on pages 58–60 for more information.

RELATED PUBLICATIONS

33 Users may also wish to refer to the following related publications which are available from ABS Bookshops:

- *Australian Capital Territory at a Glance*, Cat. no. 1314.8, issued annually.
- *Australian Capital Territory Business Indicators*, Cat. no. 1303.8, issued monthly.
- *Australian Capital Territory Statistical Summary*, Cat. no. 1307.8, issued annually.
- *Information Paper: Labour Force Survey—Sample Design*, Cat. no. 6269.0.
- *Information Paper: Regional Labour Force Statistics, September 1997*, Cat. no. 6262.0
- *Labour Force, Australia, Preliminary*, Cat. no. 6202.0, issued monthly.
- *Labour Force, Australia*, Cat. no. 6203.0, issued monthly.

ADDITIONAL DATA

34 The ABS can also make available information which is not published. In general, a charge is made for providing unpublished information.

ROUNDING

35 Figures have been rounded and discrepancies may occur between sums of the component items and the totals shown.

APPENDIX

SUPPLEMENTARY TOPICS

Although emphasis in the population survey is placed on the regular collection of data on demographic and labour force characteristics, supplementary and special surveys of particular aspects of the labour force are carried out from time to time.

It was ABS practice to release statistics from supplementary and special surveys in *Labour Force, Australia* (Cat. no. 6203.0). This practice ceased with the release of the February 1996 issue of *Labour Force, Australia*. For future releases of supplementary labour data, separate publications containing summary results and key findings will be produced.

Equivalent tables at the State level are available on microfiche. In addition, other unpublished data can be provided to meet special requirements.

CATALOGUE/ PRODUCT NO.	TITLE OF PUBLICATION/STANDARD DATA SERVICE	PRICE(a) \$
6206.0	Labour Force Experience, Australia, February 1999	19.50
6209.0	Labour Mobility, Australia, February 1998	18.50
6216.0	Multiple Jobholding, Australia, August 1997	18.00
6220.0	Persons not in the Labour Force, Australia, September 1999	19.00
6222.0	Job Search Experience of Unemployed Persons, Australia, July 1999	18.50
6224.0	Labour Force Status and Other Characteristics of Families, Australia, June 1999	19.00
6227.0	Transition from Education to Work, Australia, May 1999	19.50
6238.0	Retirement and Retirement Intentions, Australia, November 1997	21.00
6245.0	Successful and Unsuccessful Job Search Experience, Australia, July 1998	18.50
6247.1	Part-time, Casual and Temporary Employment, NSW, October 1997	16.00
6250.0	Labour Force Status and Other Characteristics of Migrants, Australia, November 1996	15.50
6254.0	Career Experience, Australia, November 1998	19.00
6265.0	Underemployed Workers, Australia, September 1998	19.00
6266.0	Retrenchment and Redundancy, Australia, July 1997	21.00
6272.0	Participation in Education, Australia, September 1999	18.50
6275.0	Persons Employed at Home, Australia, September 1995	14.50
6286.0	Australians' Employment and Unemployment Patterns, 1994–1997	23.00
6310.0	Employee Earnings, Benefits and Trade Union Membership, Australia, August 1999	23.00
6342.0	Working Arrangements, Australia, August 1997	19.00

(a) Prices quoted are subject to revision

MAJOR STATISTICAL REGION	STATISTICAL REGION/ STATISTICAL REGION SECTOR	STATISTICAL LOCAL AREA
SYDNEY	Inner Sydney and Inner Western Sydney (SRs)	Ashfield (A)
		Botany (A)
		Burwood (A)
		Concord (A)
		Drummoyne (A)
		Leichhardt (A)
		Marrickville (A)
		South Sydney (C)
		Strathfield (A)
		Sydney (C)—Inner Sydney (C)—Remainder
	Inner Sydney (SR)	Botany (A)
		Leichhardt (A)
		Marrickville (A)
		South Sydney (C)
		Sydney (C)—Inner Sydney (C)—Remainder
	Eastern Suburbs (SR)	Randwick (C)
		Waverley (A)
		Woollahra (A)
	St George–Sutherland (SR)	Hurstville (C)
		Kogarah (A)
		Rockdale (A)
		Sutherland Shire (A)
	Canterbury–Bankstown (SR)	Bankstown (C)
		Canterbury (A)
	Fairfield–Liverpool and Outer South Western Sydney (SRs)	Camden (A)
		Campbelltown (C)
		Fairfield (C)
		Liverpool (C)
		Wollondilly (A)
	Fairfield–Liverpool (SR)	Fairfield (C)
		Liverpool (C)
	Central Western Sydney (SR)	Auburn (A)
		Holroyd (C)
		Parramatta (C)
	Outer Western Sydney (SR) and Blacktown (C)	Blacktown (C)
		Blue Mountains (C)
		Hawkesbury (C)
		Penrith (C)

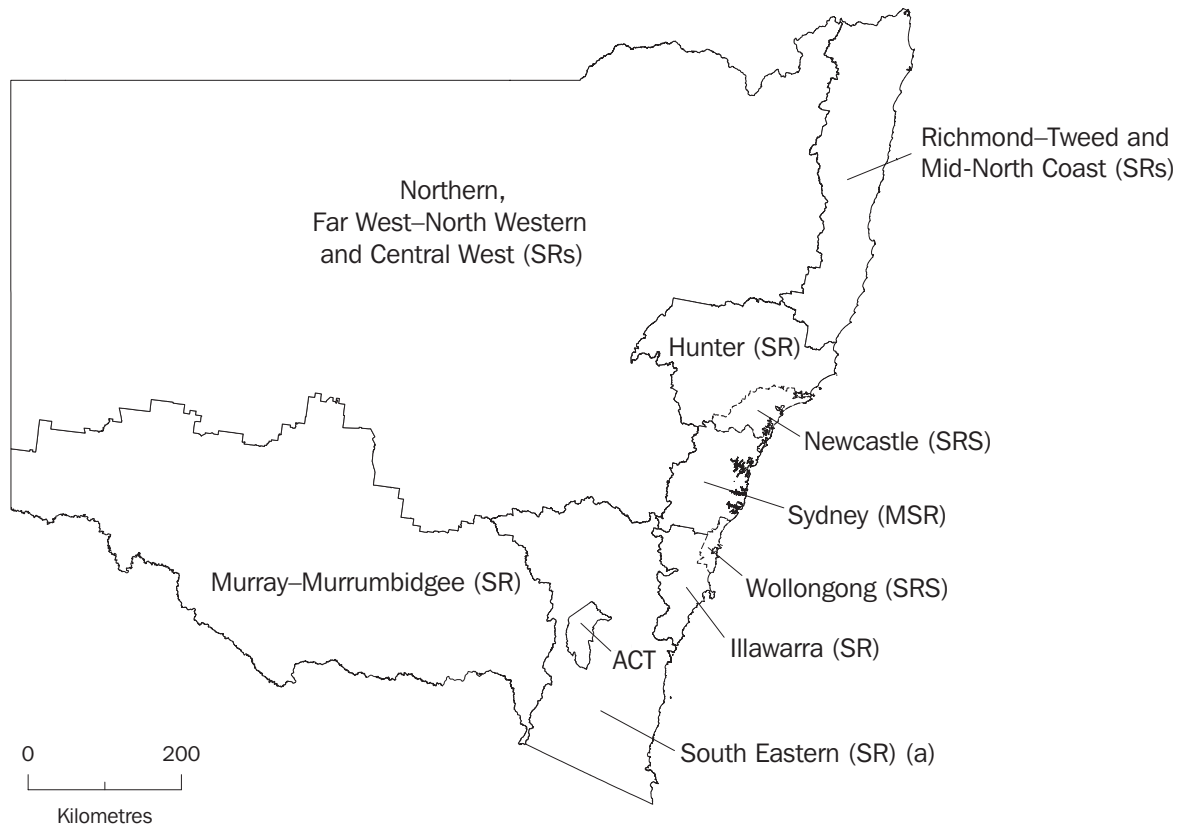
MAJOR STATISTICAL REGION	STATISTICAL REGION/ STATISTICAL REGION SECTOR	STATISTICAL LOCAL AREA
SYDNEY <i>continued</i>	Lower Northern Sydney (SR)	Hunter's Hill (A) Lane Cove (A) Mosman (A) North Sydney (A) Ryde (C) Willoughby (C)
	Hornsby–Ku-ring-gai (SR) and Baulkham Hills (A)	Baulkham Hills (A) Hornsby (A) Ku-ring-gai (A)
	Northern Beaches (SR)	Manly (A) Pittwater (A) Warringah (A)
	Gosford–Wyong (SR)	Gosford (C) Wyong (A)
BALANCE OF NSW	Hunter (SR)	Cessnock (C) Dungog (A) Gloucester (A) Great Lakes (A) Lake Macquarie (C) Maitland (C) Merriwa (A) Murrurundi (A) Muswellbrook (A) Newcastle (C)—Inner Newcastle (C)—Remainder Port Stephens (A) Scone (A) Singleton (A)
	Newcastle (SRS)	Cessnock (C) Lake Macquarie (C) Maitland (C) Newcastle (C)—Inner Newcastle (C)—Remainder Port Stephens (A)

MAJOR STATISTICAL REGION	STATISTICAL REGION/ STATISTICAL REGION SECTOR	STATISTICAL LOCAL AREA
BALANCE OF NSW <i>continued</i>	Illawarra and South Eastern (SRs)	Bega Valley (A)
		Bombala (A)
		Boorowa (A)
Cooma–Monaro (A)		
Crookwell (A)		
Eurobodalla (A)		
Goulburn (C)		
Gunning (A)		
Harden (A)		
Kiama (A)		
Mulwaree (A)		
Queanbeyan (C)		
Shellharbour (A)		
Shoalhaven (C)		
Snowy River (A)		
Tallaganda (A)		
Wingecarribee (A)		
Wollongong (C)		
Yarrowlumla (A)— Part A		
Yarrowlumla (A)—Part B		
Yass (A)		
Young (A)		
	Illawarra (SR)	Kiama (A)
		Shellharbour (A)
		Shoalhaven (C)
		Wingecarribee (A)
		Wollongong (C)
	Richmond–Tweed and Mid-North Coast (SRs)	Ballina (A)
		Bellingen (A)
		Byron (A)
		Casino (A)
		Coffs Harbour (C)
		Copmanhurst (A)
		Grafton (C)
		Greater Taree (C)
		Hastings (A)
		Kempsey (A)
		Kyogle (A)
		Lismore (C)
		Lord Howe Island
		Macleay (A)
		Nambucca (A)
		Nymboida (A)
		Richmond River (A)
		Tweed (A)—Part A
		Tweed (A)—Part B
		Ulmarra (A)

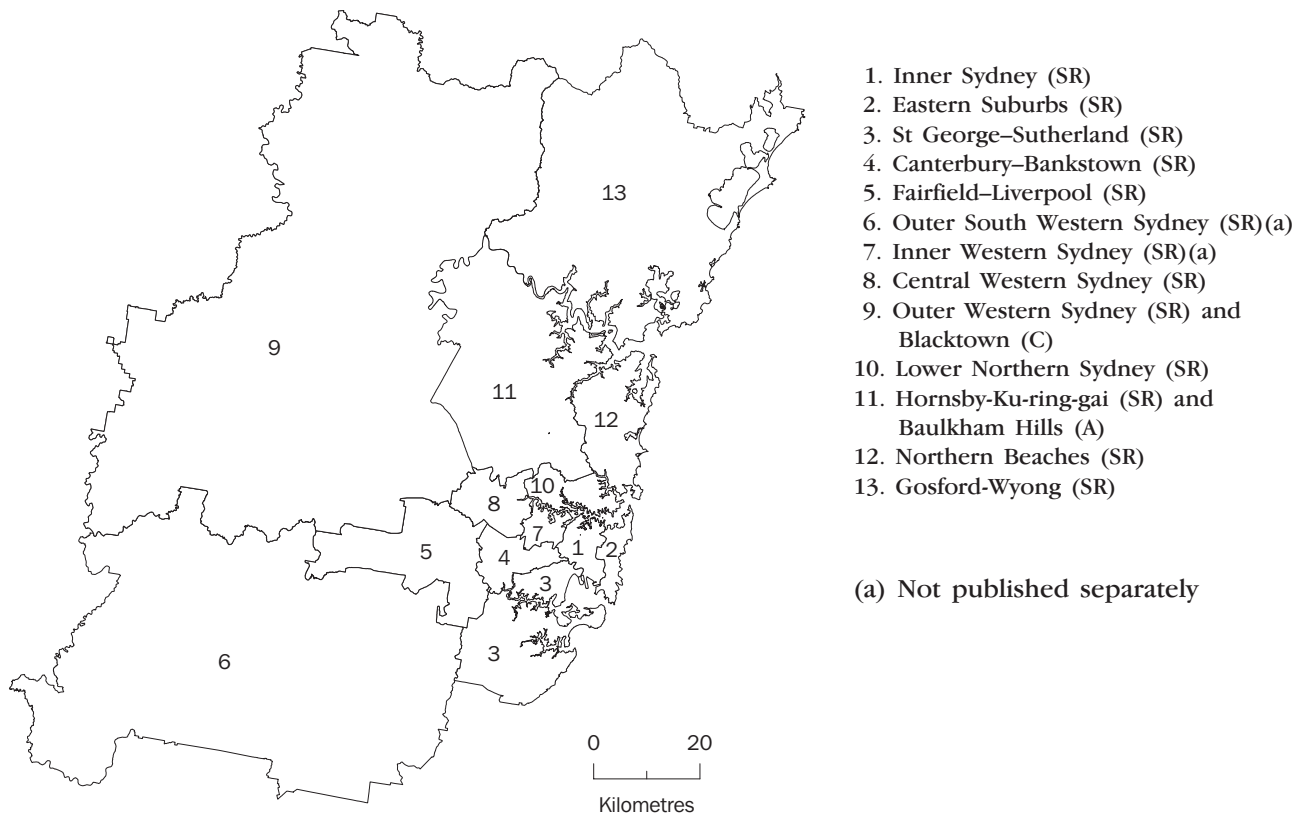
MAJOR STATISTICAL REGION	STATISTICAL REGION/ STATISTICAL REGION SECTOR	STATISTICAL LOCAL AREA
BALANCE OF NSW <i>continued</i>	Northern, Far West–North Western and Central West (SRs)	Armidale (C) Barraba (A) Bathurst (C) Bingara (A) Bland (A) Blayney (A)—Part A Blayney (A)—Part B Bogan (A) Bourke (A) Brewarrina (A) Broken Hill (C) Central Darling (A) Cabonne (A)—Part A Cabonne (A)—Part B Cabonne (A)—Part C Cobar (A) Coolah (A) Coonabarabran (A) Coonamble (A) Cowra (A) Dubbo (C) Dumaresq (A) Evans (A)—Part A Evans (A)—Part B Forbes (A) Gilgandra (A) Glen Innes (A) Greater Lithgow (C) Gunnedah (A) Guyra (A) Inverell (A)—Part A Inverell (A)—Part B Lachlan (A) Manilla (A) Moree Plains (A) Mudgee (A) Narrabri (A) Narromine (A) Nundle (A) Oberon (A) Orange (C) Parkes (A) Parry (A) Quirindi (A) Rylstone (A) Severn (A) Tamworth (C) Tenterfield (A) Unincorporated Far West Uralla (A) Walcha (A) Walgett (A) Warren (A) Weddin (A) Wellington (A) Yallaroi (A)

MAJOR STATISTICAL REGION	STATISTICAL REGION/ STATISTICAL REGION SECTOR	STATISTICAL LOCAL AREA
BALANCE OF NSW <i>continued</i>	Murray–Murrumbidgee (SR)	Albury (C) Balranald (A) Berrigan (A) Carrathool (A) Conargo (A) Coolamon (A) Cootamundra (A) Corowa (A) Culcairn (A) Deniliquin (A) Griffith (C) Gundagai (A) Hay (A) Holbrook (A) Hume (A) Jerilderie (A) Junee (A) Leeton (A) Lockhart (A) Murray (A) Murrumbidgee (A) Narrandera (A) Temora (A) Tumbarumba (A) Tumut (A) Urana (A) Wagga Wagga (C) Wakool (A) Wentworth (A) Windouran (A)
NOT APPLICABLE	Australian Capital Territory and South Eastern (SRs)	Australian Capital Territory Bega Valley (A) Bombala (A) Boorowa (A) Cooma–Monaro (A) Crookwell (A) Eurobodalla (A) Goulburn (C) Gunning (A) Harden (A) Mulwaree (A) Queanbeyan (C) Snowy River (A) Tallaganda (A) Yarrowlumla (A)—Part A Yarrowlumla (A)—Part B Yass (A) Young (A)

REGIONS OF NSW AND ACT



REGIONS OF SYDNEY (MSR)



TECHNICAL NOTE: DATA RELIABILITY

SOURCES OF ERROR

There are a number of possible sources of error in sample surveys and these can be classified into two types: sampling error; and non-sampling error.

NON-SAMPLING ERRORS

Non-sampling errors may arise as a result of errors in the reporting, recording or processing of the data and can occur even if there is a complete enumeration of the population. Non-sampling errors can be introduced through: inadequacies in the questionnaire; non-response; inaccurate reporting by respondents; errors in the application of survey procedures; incorrect recording of answers; and errors in data entry and processing.

It is difficult to measure the size of the non-sampling errors and the extent of these errors could vary considerably in significance from survey to survey, and from question to question. However, every effort is made in the design of the survey and development of survey procedures to minimise the effect of these errors.

SAMPLING ERRORS

Sampling error is the error which occurs by chance because the data were only obtained from a sample, not the entire population.

Standard errors of estimates

One measure of the variability of estimates which occurs as a result of surveying only a sample of the population is the standard error (SE). There are about two chances in three that a survey estimate is within one standard error of the figure that would have been obtained if all persons had been included and about 19 chances in 20 that it is within two standard errors. That is, there are 19 chances in 20 that the true estimate is in the range:

$$X - 2 \times SE(X) \text{ to } X + 2 \times SE(X)$$

(where X is the estimate)

The standard error of an estimate can be obtained from the tables on pages 61–63. Linear interpolation should be used to calculate the standard error of estimates falling between the sizes of estimates listed in the table (see example on page 60).

In the tables in this publication, only estimates with relative standard errors of 25% or less, and percentages based on such estimates, are considered sufficiently reliable for most purposes. However, estimates and percentages with larger relative standard errors have been included and are preceded by an asterisk (e.g. *3.4) to indicate they are subject to high standard errors and should be used with caution.

Standard errors of estimates *continued* The standard error can also be expressed as a percentage of the estimate and this is known as the relative standard error (RSE). The RSE is determined by dividing the standard error of an estimate SE(X) by the estimate X and expressing it as a percentage. That is:

$$RSE(X) = \frac{SE(X) \times 100}{X}$$

(where X is the estimate)

The look up list on the following page provides a guide for the calculation of standard errors and relative standard errors for a range of statistics.

CALCULATING STANDARD ERRORS

The methods described below refer to the calculation of standard errors for NSW estimates. Standard errors of ACT estimates should be calculated from the table on page 63.

MEASURE OF RELIABILITY TO BE DETERMINED	METHOD
Standard errors of estimates of employed persons.	Determine the SE from the table on page 61 directly.
Standard errors of estimates of unemployed persons.	Multiply the SE from the table on page 61 by 1.06.
Standard errors of estimates of persons not in the labour force.	Multiply the SE from the table on page 61 by 1.1.
Standard errors of rates (e.g. the unemployment rate which is based on the number of unemployed persons expressed as a percentage of the number of persons in the labour force).	Determine the RSE of the numerator (X) and the denominator (Y) then apply the following formula: $RSE \left(\frac{X}{Y} \right) = \sqrt{[RSE(X)]^2 - [RSE(Y)]^2}$
Standard error of average duration of unemployment.	Determine the RSE for the number of persons on which the average is based and multiply this by 1.3.
Standard error of median duration of unemployment.	Determine the RSE for the number of persons on which the average is based and multiply this by 2.0.
Standard error of monthly movements.	From the table on page 62, look up the SE of the larger estimate.
Standard error of quarterly movements.	Determine the standard error of the larger estimate from the table on page 61 and multiply this by 1.11.
Standard error of annual movements.	Determine the standard error of the larger estimate from the table on page 61 and multiply this by 1.3.

LINEAR INTERPOLATION

Linear interpolation is used to determine the standard error of an estimate which falls between two values listed in the size of estimate column in the tables on page 61 or 63. Linear interpolation is best described using an example. In November 2000, there were 741,300 (X_e) employed persons working part-time in NSW. This estimate falls between the values 500,000 (X_l) and 1,000,000 (X_u) in the table on page 61.

The standard error of the estimate is determined as follows. Firstly calculate

$$\begin{aligned} F &= \frac{X_e - X_l}{X_u - X_l} \\ &= \frac{741,300 - 500,000}{1,000,000 - 500,000} \\ &= 0.48 \end{aligned}$$

Secondly, calculate the standard error of the estimate, $SE(X_e)$ thus:

$$\begin{aligned} SE(X_e) &= SE(X_l) + (F \times [SE(X_u) - SE(X_l)]) \\ &= 8,350 + (0.48 \times [11,650 - 8,350]) \\ &= 9,934 \end{aligned}$$

Therefore the standard error of the number of employed persons working part-time in NSW in November 2000 is 10,000.

STANDARD ERRORS
LEVEL OF ESTIMATES(a), NSW
REGIONS IN SYDNEY (MSR)

<i>Size of estimate</i>	<i>NSW</i>	<i>Sydney (MSR)</i>	<i>Balance of NSW (MSR)</i>	<i>Inner Sydney and Inner Western Sydney (SRs)</i>	<i>Inner Sydney (SR)</i>	<i>Eastern Suburbs (SR)</i>	<i>St George-Sutherland</i>	<i>Canterbury-Bankstown (SR)</i>	<i>Fairfield-Liverpool and Outer South Western Sydney (SRs)</i>	<i>Fairfield-Liverpool (SR)</i>
500	320	440	400	310	290	240	200	260	310	300
1 000	520	630	640	460	440	360	310	390	460	450
3 000	1 000	1 060	1 060	880	830	680	590	740	880	850
5 000	1 350	1 340	1 340	1 180	1 110	910	790	990	1 180	1 140
10 000	1 900	1 820	1 810	1 740	1 630	1 340	1 160	1 460	1 730	1 680
20 000	2 600	2 440	2 420	2 540	2 380	1 960	1 700	2 130	2 530	2 450
50 000	3 700	3 500	3 520	4 130	3 880	3 190	2 760	3 470	4 120	3 990
100 000	4 600	4 500	4 600	5 900	5 600	4 600	4 000	5 000	5 900	5 700
200 000	5 750	5 800	6 000	8 400	7 900	6 500	5 600	7 100	8 400	8 100
300 000	6 700	6 700	6 900	10 300	9 600	7 900	6 900	8 600	10 200	9 900
500 000	8 350	7 900	8 300	13 200	12 400	10 200	8 800	11 100	13 100	12 700
1 000 000	11 650	9 800	10 600	—	—	—	—	—	—	—
2 000 000	17 150	12 000	13 300	—	—	—	—	—	—	—
5 000 000	30 750	15 300	17 700	—	—	—	—	—	—	—

REGIONS IN SYDNEY (MSR)—continued

<i>Size of estimates</i>	<i>Central Western Sydney (SR)</i>	<i>Outer Western Sydney (SR) and Blacktown (C)</i>	<i>Lower Northern Sydney (SR)</i>	<i>Hornsby-Ku-ring-gai (SR) and Baulkham Hills (A)</i>	<i>Northern Beaches</i>	<i>Gosford Wyong (SR)</i>
500	230	260	270	260	260	230
1 000	340	400	410	390	400	350
3 000	650	760	770	750	760	670
5 000	870	1 010	1 030	1 000	1 010	890
10 000	1 290	1 490	1 520	1 480	1 490	1 310
20 000	1 880	2 180	2 220	2 150	2 170	1 920
50 000	3 060	3 550	3 620	3 510	3 540	3 120
100 000	4 400	5 100	5 200	5 000	5 100	4 500
200 000	6 200	7 200	7 300	7 100	7 200	6 400
300 000	7 600	8 800	9 000	8 700	8 800	7 800

REGIONS IN BALANCE OF NSW (MSR)

<i>Size of estimates</i>	<i>Hunter (SR)</i>	<i>Newcastle (SRS)</i>	<i>Illawarra and South Eastern (SRS)</i>	<i>Illawarra (SR)</i>	<i>Wollongong (SRS)</i>	<i>Richmond-Tweed and Mid North Coast (SRs)</i>	<i>Northern, Far West and North Western and Central West (SRs)</i>	<i>Murray-Murrumbidgee (SR)</i>
500	300	280	310	290	240	340	330	340
1 000	450	420	470	440	360	510	500	520
3 000	850	810	900	830	680	970	940	990
5 000	1 140	1 080	1 200	1 110	910	1 300	1 260	1 320
10 000	1 680	1 590	1 770	1 630	1 340	1 920	1 860	1 950
20 000	2 450	2 320	2 580	2 390	1 950	2 800	2 720	2 850
50 000	4 000	3 780	4 210	3 890	3 180	4 560	4 430	4 640
100 000	5 700	5 400	6 000	5 600	4 600	6 500	6 300	6 600
200 000	8 100	7 700	8 600	7 900	6 500	9 300	9 000	9 400
300 000	9 900	9 400	10 500	9 700	7 900	11 300	11 000	11 500

(a) Standard errors of estimates from September 1997. For standard errors for earlier periods, see previous issues of this publication.

STANDARD ERRORS
MOVEMENT ESTIMATES(a), NSW
REGIONS IN SYDNEY (MSR)

<i>Size of estimates</i>	NSW	Sydney (MSR)	Balance of NSW (MSR)	Inner Sydney and Inner Western Sydney (SRs)	Inner Sydney (SR)	Eastern Suburbs (SR)	St George-Sutherland (SR)	Canterbury-Bankstown (SR)	Western Sydney (SRs)	Fairfield-Liverpool and Outer South Fairfield-Liverpool (SR)
500	580	600	580	310	280	210	200	250	270	240
1 000	730	750	720	420	380	290	270	340	370	340
3 000	1 060	1 070	1 030	700	640	490	460	570	620	560
5 000	1 260	1 270	1 220	890	810	620	580	720	790	710
10 000	1 590	1 600	1 500	1 250	1 100	850	800	1 000	1 100	1 000
20 000	2 010	2 000	1 900	1 700	1 550	1 200	1 100	1 350	1 500	1 350
50 000	2 740	2 700	2 550	2 600	2 350	1 800	1 700	2 100	2 300	2 100
100 000	3 460	3 500	3 200	3 600	3 250	2 500	2 300	2 900	3 150	2 850
200 000	4 370	4 200	4 000	4 950	4 450	3 450	3 200	4 000	4 400	3 950
300 000	5 000	4 800	4 600	5 950	5 400	4 150	3 850	4 800	5 300	4 750
500 000	5 950	5 700	5 400	7 550	6 850	5 250	4 900	6 100	6 700	6 050
1 000 000	7 510	7 100	6 800	—	—	—	—	—	—	—
2 000 000	9 490	8 900	8 500	—	—	—	—	—	—	—
5 000 000	12 920	12 000	11 400	—	—	—	—	—	—	—

REGIONS IN SYDNEY (MSR)—continued

<i>Size of estimate</i>	Central Western Sydney (SR)	Outer Western Sydney (SR) and Blacktown (C)	Lower Northern Sydney (SR)	Hornsby-Ku-ring-gai (SR) and Baulkham Hills (A)	Northern Beaches (SR)	Gosford Wyong(SR)
500	210	280	250	180	220	220
1 000	290	390	340	250	300	310
3 000	480	650	570	420	500	520
5 000	600	820	720	540	630	650
10 000	850	1 150	1 000	750	850	900
20 000	1 150	1 550	1 400	1 000	1 200	1 250
50 000	1 750	2 400	2 100	1 550	1 850	1 900
100 000	2 450	3 300	2 900	2 150	2 500	2 650
200 000	3 350	4 550	4 000	3 000	3 500	3 650
300 000	4 050	5 500	4 850	3 600	4 200	4 400

REGIONS IN BALANCE OF NSW (MSR)

<i>Size of estimate</i>	Hunter (SR)	Newcastle (SRS)	Illawarra and South Eastern (SRS)	Illawarra (SR)	Wollongong (SRS)	Richmond-Tweed and Mid North Coast (SRs)	Northern, Far West North Western and Central West (SRs)	Murray-Murrumbidgee (SR)
500	290	270	300	260	220	320	310	280
1 000	400	370	410	360	300	440	430	390
3 000	660	620	690	600	500	740	720	650
5 000	840	780	870	760	630	930	910	830
10 000	1 150	1 100	1 200	1 050	850	1 300	1 250	1 150
20 000	1 600	1 500	1 650	1 450	1 200	1 800	1 750	1 600
50 000	2 450	2 300	2 550	2 200	1 850	2 700	2 650	2 400
100 000	3 400	3 150	3 500	3 050	2 550	3 750	3 650	3 350
200 000	4 650	4 350	4 800	4 200	3 500	5 200	5 050	4 600
300 000	5 650	5 250	5 800	5 100	4 250	6 250	6 100	5 550

(a) Standard errors of month to month movements from October 1997–November 1999 onwards. For standard errors for earlier periods, see previous issues of this publication.

STANDARD ERRORS

STANDARD ERRORS, LEVEL ESTIMATES(a)—NSW AND ACT

<i>Size of estimate</i>	<i>ACT and South Eastern (SRs)</i>	<i>ACT</i>
500	280	210
1 000	390	270
3 000	620	400
5 000	770	500
10 000	1 020	600
20 000	1 340	800
50 000	1 910	1 200
100 000	2 500	1 650
200 000	3 200	2 250
300 000	3 700	2 700

(a) Standard errors of estimates from September 1997. For standard errors for earlier periods, see previous issues of this publication.

STANDARD ERRORS, MOVEMENT ESTIMATES(a)—NSW AND ACT

<i>Size of estimate</i>	<i>ACT and South Eastern (SRs)</i>	<i>ACT</i>
500	220	170
1 000	280	210
3 000	420	310
5 000	510	360
10 000	650	450
20 000	850	570
50 000	1 200	760
100 000	1 550	960
200 000	2 000	1 200
300 000	2 300	1 370

(a) Standard errors of month to month movements from October 1997–November 1999 onwards. For standard errors for earlier periods, see previous issues of this publication.

FOR MORE INFORMATION...

- INTERNET* **www.abs.gov.au** the ABS web site is the best place to start for access to summary data from our latest publications, information about the ABS, advice about upcoming releases, our catalogue, and Australia Now—a statistical profile.
- LIBRARY* A range of ABS publications is available from public and tertiary libraries Australia-wide. Contact your nearest library to determine whether it has the ABS statistics you require, or visit our web site for a list of libraries.
- CPI INFOLINE* For current and historical Consumer Price Index data, call 1902 981 074 (call cost 77c per minute).
- DIAL-A-STATISTIC* For the latest figures for National Accounts, Balance of Payments, Labour Force, Average Weekly Earnings, Estimated Resident Population and the Consumer Price Index call 1900 986 400 (call cost 77c per minute).

INFORMATION SERVICE

Data which have been published and can be provided within five minutes are free of charge. Our information consultants can also help you to access the full range of ABS information—ABS user-pays services can be tailored to your needs, time frame and budget. Publications may be purchased. Specialists are on hand to help you with analytical or methodological advice.

- PHONE* **1300 135 070**
- EMAIL* **client.services@abs.gov.au**
- FAX* 1300 135 211
- POST* Client Services, ABS, GPO Box 796, Sydney 1041

WHY NOT SUBSCRIBE?

ABS subscription services provide regular, convenient and prompt deliveries of ABS publications and products as they are released. Email delivery of monthly and quarterly publications is available.

- PHONE* 1300 366 323
- EMAIL* subscriptions@abs.gov.au
- FAX* 03 9615 7848
- POST* Subscription Services, ABS, GPO Box 2796Y, Melbourne 3001



2620110011000
ISSN 1322-0179

RRP \$24.00

© Commonwealth of Australia 2001